

## Availability

The connections **union nut with female or male thread (code FV, MV)** are available for the following GEMÜ diaphragm valves: 601, 602, 605, 611, 612, 615, 625, 650, 653, 654, 671, 673, 687, 695 (each with valve body material 1.4435 (316L) (code 40))

### Availability diaphragm sizes/nominal sizes

Diaphragm size	DN	NPS
8	8	1/4"
	10	3/8"
	15	1/2"
10	10	3/8"
	15	1/2"
	20	3/4"
25	20	3/4"
	25	1"

### Availability of grades of surface finish

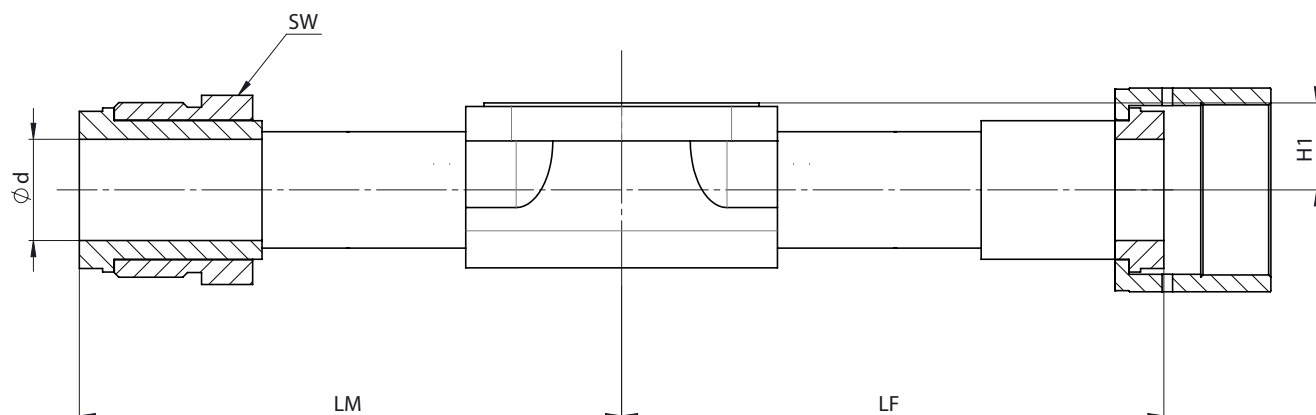
Media wetted internal surfaces	Union nut with male thread (code MV)		Union nut with female thread (code FV)
	Electropolished	Electropolished <sup>1)</sup>	Electropolished <sup>1)</sup>
Ra ≤ 0.4 µm	1537	1799	1799
Ra ≤ 0.25 µm	1516	1787	1787

1) Note: The following points apply to the surface finish codes 1787 and 1799:

- The specified surface finish only applies to the media wetted internal surfaces of the components used.
- The weld seams are not reworked.
- No surface finish can be defined for the complete product or component.

## Dimensions

### Union nut with female and male thread (code FV, MV)



#### Connection type union nut with female thread (code FV)

MG	DN	NPS	Ød	H1	LF	SW
8	8	1/4"	4.6	8.5	40.9	3/4"
	10	3/8"	7.8	8.5	51.0	1 1/16"
	15	1/2"	10.3	8.5	41.4	1 1/16"
10	10	3/8"	7.8	12.5	62.5	1 1/16"
	15	1/2"	10.3	12.5	52.9	1 1/16"
	20	3/4"	16.7	12.5	85.7	1 1/2"
25	20	3/4"	16.7	19.0	92.2	1 1/2"
	25	1"	22.1	19.0	99.3	1 3/4"

#### Connection type union nut with male thread (code MV)

MG	DN	NPS	Ød	H1	LM	SW
8	8	1/4"	4.6	8.5	55.9	5/8"
	10	3/8"	7.8	8.5	68.1	15/16"
	15	1/2"	10.3	8.5	58.4	15/16"
10	10	3/8"	7.8	12.5	79.6	15/16"
	15	1/2"	10.3	12.5	69.9	15/16"
	20	3/4"	16.7	12.5	85.7	1 5/16"
25	20	3/4"	16.7	19.0	92.2	1 5/16"
	25	1"	22.1	19.0	99.3	1 5/8"

Dimensions in mm