

GEMÜ 1210

Mount for proximity switches



Features

- Damping surface of proximity switches protected against damage and cleaning media
- Easily cleanable
- High-grade surface finish

Description

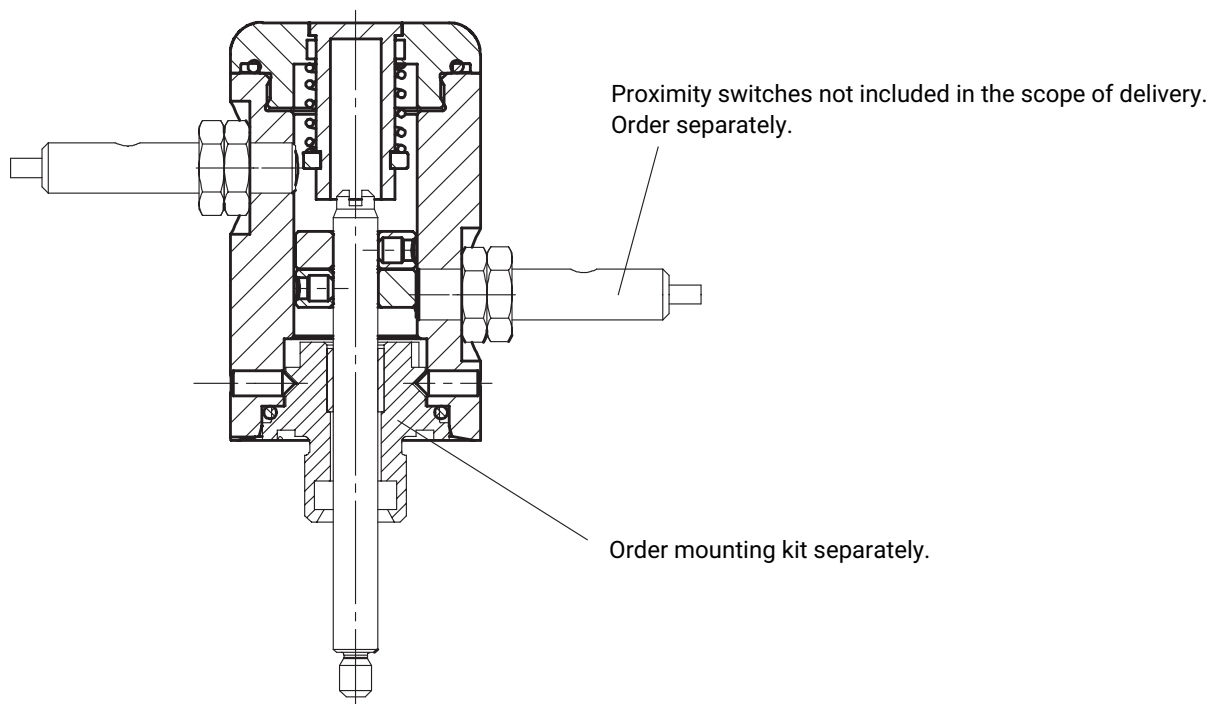
The GEMÜ 1210 is an enclosed proximity switch mount in stainless steel for two proximity switches M8 x 1 or M12 x 1 (only suitable for GEMÜ 550 and GEMÜ 650). An integral optical position indicator is standard. The basic version does not contain any proximity switches.

Technical specifications

- **Linear measuring range:** 6 to 40 mm
- **Body material:** Stainless steel

Technical data depends on the respective configuration

Product description



Order data

The order data provide an overview of standard configurations.

Please check the availability before ordering. Other configurations available on request.

Note: Mounting kit 1210S01Z... dependent on valve type. Please order separately. Data required on valve type, DN, control function and actuator size. The stroke (code) of the mounting kit determines the stroke (code) of the indicator head.

Order codes

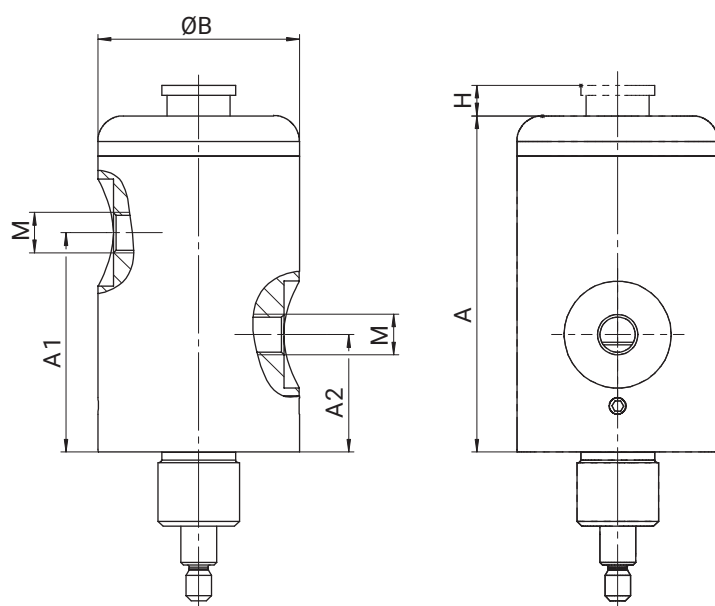
1 Type	Code
Mount for proximity switches	1210
2 Fieldbus	Code
Without	000
3 Accessory	Code
Accessory	Z
4 Stroke	Code
For 2 - 6 mm stroke	06
For 2 - 10 mm stroke	10

4 Stroke	Code
For 2 - 20 mm stroke	20
For 2 - 40 mm stroke	40
5 Optical indication	Code
Without optical position indicator	N
With optical position indicator	Y
6 Proximity switch size	Code
For proximity switch M8 x 1	08
For proximity switches M12 x 1	12

Order example

Ordering option	Code	Description
1 Type	1210	Mount for proximity switches
2 Fieldbus	000	Without
3 Accessory	Z	Accessory
4 Stroke	20	For 2 - 20 mm stroke
5 Optical indication	Y	With optical position indicator
6 Proximity switch size	12	For proximity switches M12 x 1

Dimensions



Stroke (code)	A	A1	A2	$\varnothing B$	H	M
06	57.5	39.0	23.0	29.5	-	M8x1
						M12x1
10	66.0	43.0	23.0	39.5	6.0	M8x1
						M12x1
20	78.0	55.0	23.0	39.5	6.0	M8x1
						M12x1
40	98.0	75.0	23.0	48.0	6.0	M8x1
						M12x1

Dimensions in mm



GEMÜ Gebr. Müller Apparatebau GmbH & Co. KG
Fritz-Müller-Straße 6-8, 74653 Ingelfingen-Criesbach, Germany
Phone +49 (0) 7940 1230 · info@gemue.de
www.gemu-group.com