



GEMÜ e.<sup>sy</sup>-com  
Operating manual

GEMÜ e.<sup>sy</sup>-com

Operating manual



Operating manual





# GEMÜ e.<sup>sy</sup>-com Operating manual

## TABLE OF CONTENTS

<b>1</b>	<b>Specified devices</b>	<b>3</b>
1.1	Validity of the software version	3
1.2	Specified industry modem	3
1.3	Specified mobile telephones	3
1.4	Specified PDA	3
1.5	Specified Bluetooth Modules	3
1.6	Specified Internet Browser	3
<b>2</b>	<b>Necessary accessories for the use of the e.<sup>sy</sup>-com interface</b>	<b>4</b>
<b>3</b>	<b>Electrical connection</b>	<b>5</b>
3.1	Modem connection – serial	5
3.2	PC connection – serial	5
3.3	Bluetooth connection	6
<b>4</b>	<b>Installation instruction of a serial connection with a PC</b>	<b>6</b>
4.1	Systemvoraussetzungen	6
4.2	Intallation of data communication	7
4.3	Setting-up of a server for the InterNet Browser.	11
4.4	Setting connection at GEMÜ 1436 cPos	18
4.5	Take up the connection with GEMÜ 1436 cPos	19
<b>5</b>	<b>Installation instruction of a serical connection with a industry modem</b>	<b>20</b>
5.1	System settings	20
5.2	Connect the modem with GEMÜ 1436 cPos	20
5.3	Setting the connection on the GEMÜ 1436 cPos	21
5.4	Setting-up of the network connection	22
5.5	Take up the connection with GEMÜ 1436 cPos	31
<b>6</b>	<b>Installation instruction of a Bluetooth connection</b>	<b>32</b>
6.1	Connect the Bluetooth Modul at GEMÜ 1436 cPos	32
6.2	Connection with a mobil phone via Bluetooth	32
6.2.1	Setting the connection at GEMÜ 1436 cPos	32
6.3	Connection with a PC via Bluetooth	34
6.3.1	Setting the connection at GEMÜ 1436 cPos	34
6.3.2	Setting-Up of the network connection	35
6.3.3	Taking up the connection with GEMÜ 1436 cPos	44
6.4	Connection with a PDA via Bluetooth	45
6.4.1	Setting-up of a Bluetooth-connection via PDA	46
<b>7</b>	<b>How to use the GEMÜ-Browser with PC</b>	<b>51</b>
7.1	LANGUAGE	52
7.2	QUICK SETUP	52
7.3	ADVANCED SETUP	53
7.4	QUICK GUIDE	54
7.5	TECHNICAL DATA	55
7.6	PARAMETER LIST	55
7.7	UP / DOWNLOAD	56
7.8	DIAGRAMM-FUNKTION	59



## **1 Specified devices**

### **1.1 Validity of the software version**

GEMÜ 1436 cPos            V 1.6.2.1

GEMÜ SideStep            V 1.0.2.0

GEMÜ 3030 mFlow        V 1.3.0.0

### **1.2 Specified industry modem**

Multitech® MT5656ZDX-Series

### **1.3 Specified mobile telephones**

Nokia® 6310i

### **1.4 Specified PDA**

ACER® n300 Handheld  
Windows Mobile™ Version 5.0  
OS 5.1.195

HP® iPaq hx2410  
Windows CE 5.0

### **1.5 Specified Bluetooth Modules**






Stollmann® RS+E

### **1.6 Specified Internet Browser**

Microsoft Internet Explorer V5.5  
Opera V8.0  
Firefox V1.04  
Netscape V7.1

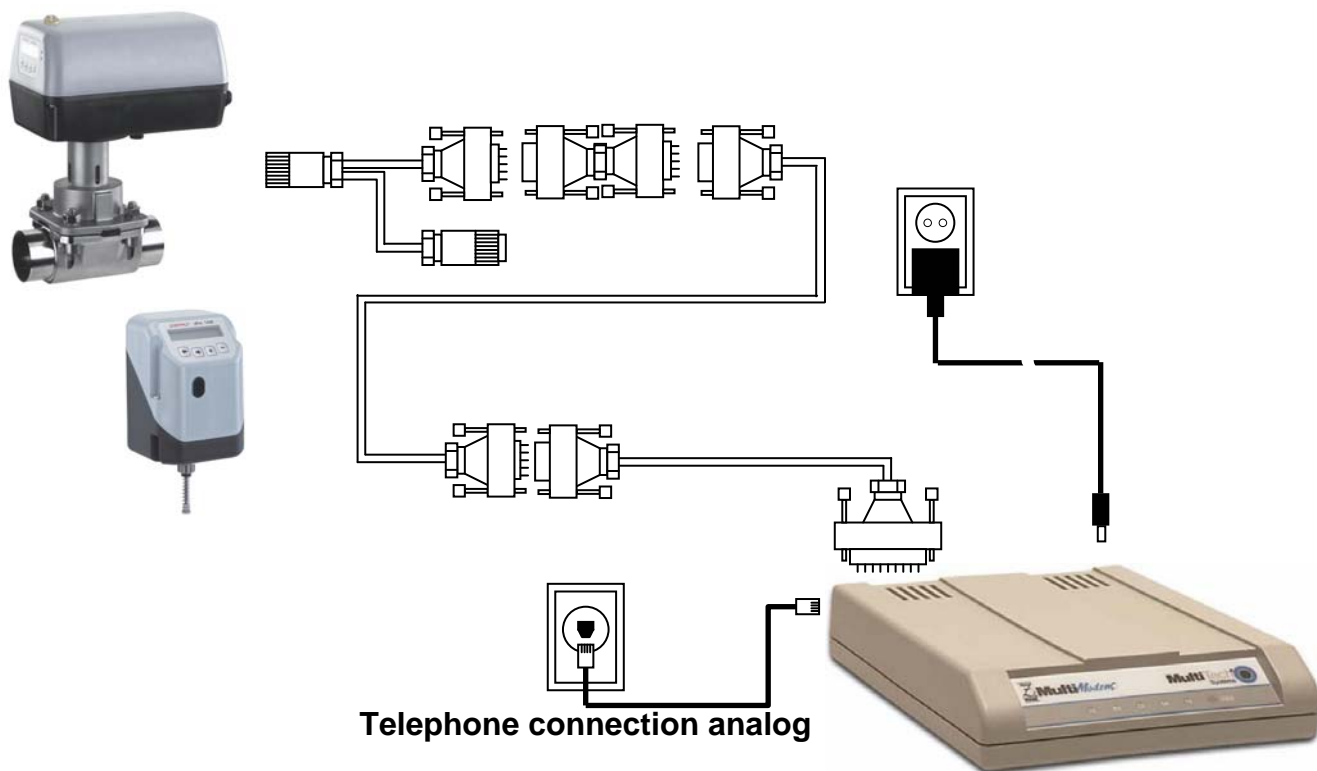
## 2 Necessary accessories for the use of the e.<sup>sy</sup>-com interface

For the use of the GEMÜ e.<sup>sy</sup>-com interface are the following accessories necessary:

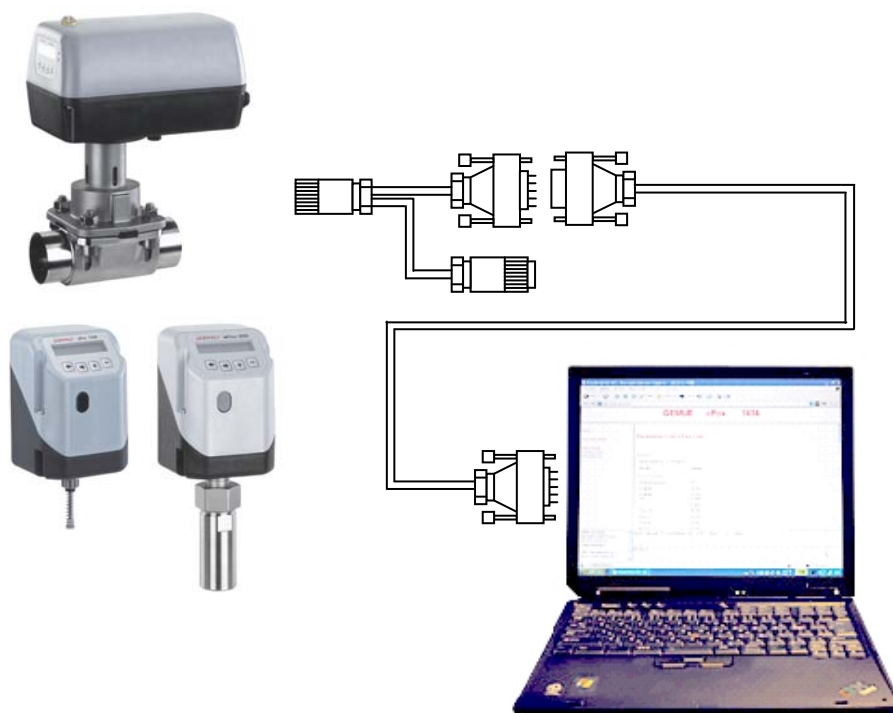
GEMÜ Type	Kind of connection	Connection with	Necessary accessories	Setting ComPort
1436 cPos 3030 mFlow SideStep	Serial cable	 PC / Laptop	1219S01Z00M000Y0 (without Sub-D extension)  1219S01Z05M005Y0 (5 meter Sub-D extension)	Auto oder Serial
1436 cPos SideStep	Modem connection	 Modem	1219S01Z00M000Y0 and industrie modem	Auto oder Analog
1436 cPos SideStep	Bluetooth	 PC / Laptop	1219S01Z00M000BT	PC/BT
1436 cPos SideStep	Bluetooth	 PDA	1219S01Z00M000BT	PDA/BT
1436 cPos SideStep	Bluetooth	 Mobil phone	1219S01Z00M000BT	Phone/BT

### 3 Electrical connection

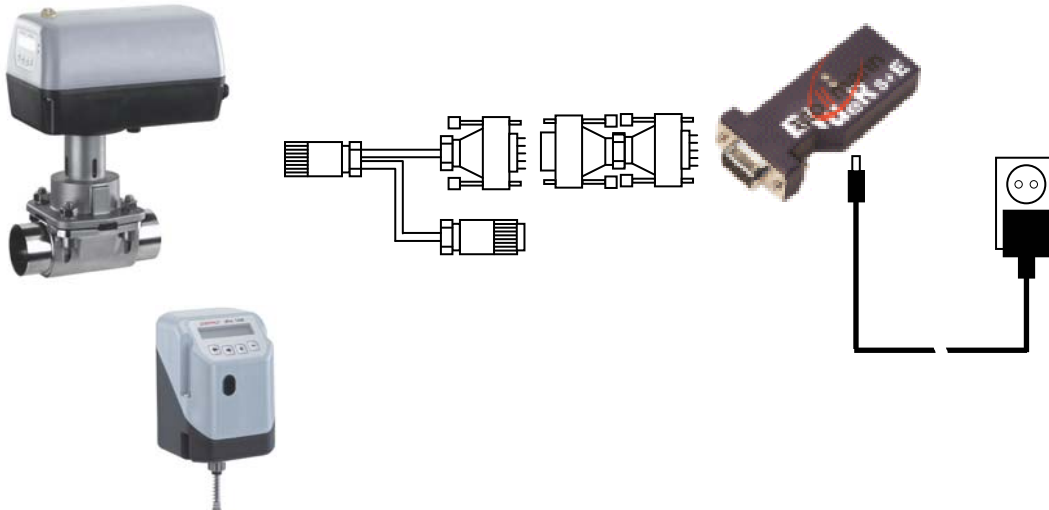
#### 3.1 Modem connection – serial



#### 3.2 PC connection – serial



### 3.3 Bluetooth connection



## 4 Installation instruction of a serial connection with a PC

### 4.1 Systemvoraussetzungen

#### Internet Browser

Microsoft Internet Explorer V5.5  
Opera V8.0  
Firefox V1.04  
Netscape V7.1

#### Operating system

Windows NT  
Windows XP/2000

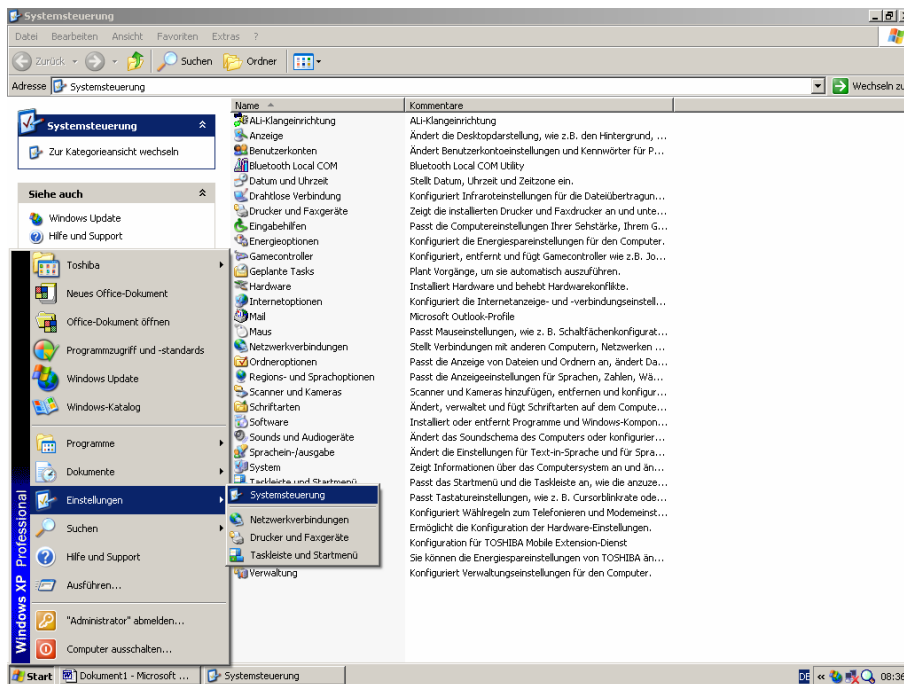
## 4.2 Intallation of data communication



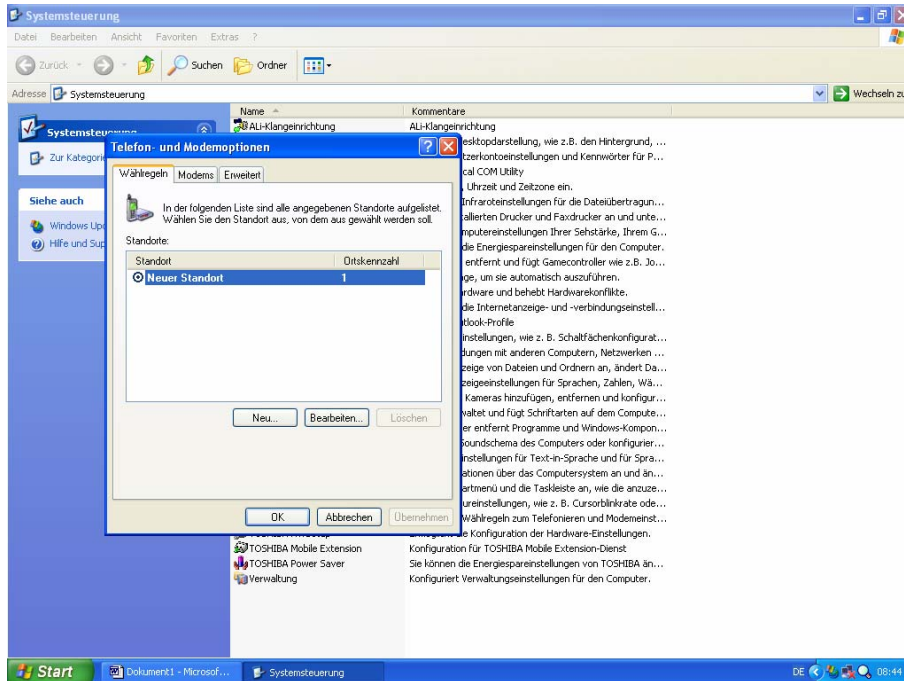
All installations and settings of this installation- and operating manual are accomplished by the example of the GEMÜ 1436 cPOS and Windows XP. These settings are valid also for further GEMÜ products with the GEMÜ e.<sup>sy</sup>-com interface, GEMÜ SideStep and GEMÜ 3030 mFlow (in preparation).

In order to make a telecommunication connection between GEMÜ 1436 cPos and a PC, a network must be already installed on the PC. All further applications should be closed during the installation, because the PC must be partly driven down for the configuration.

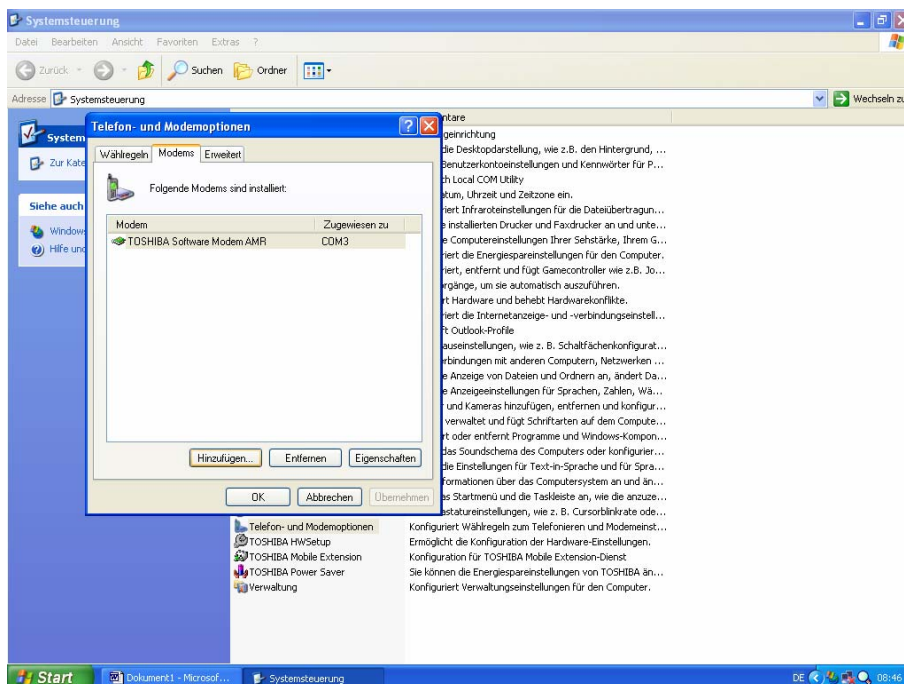
Select in the menu „start“ the menu option „settings“ to activate the window „system control“.



Select in the option „system control“ the icon „Telephone and modem options“ to activate the „Telephone- and modem options“.

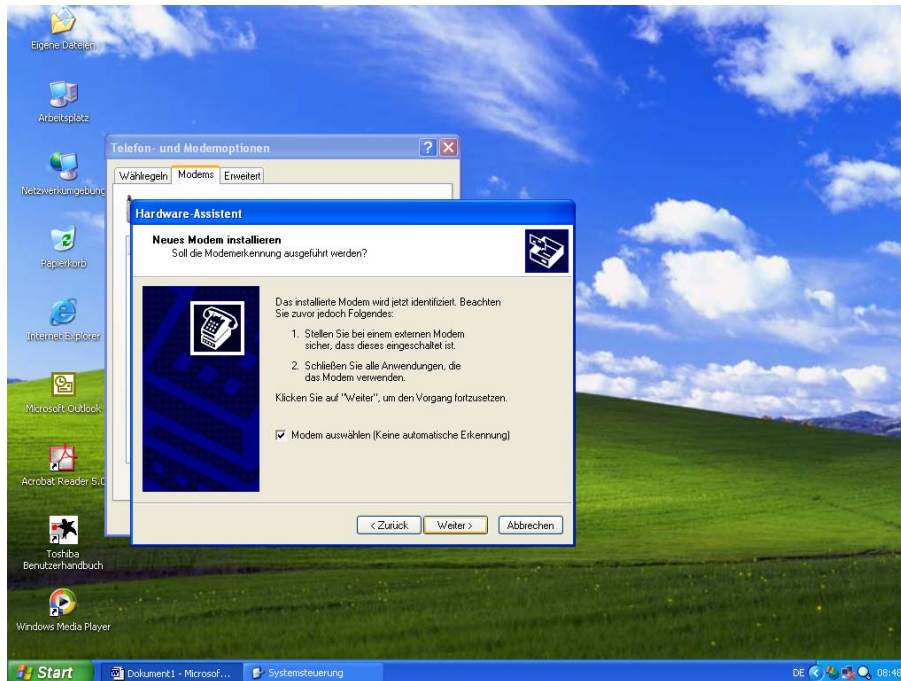


Open in the window „Telephone and modem options“ the register „modems“ and activate „add on“.

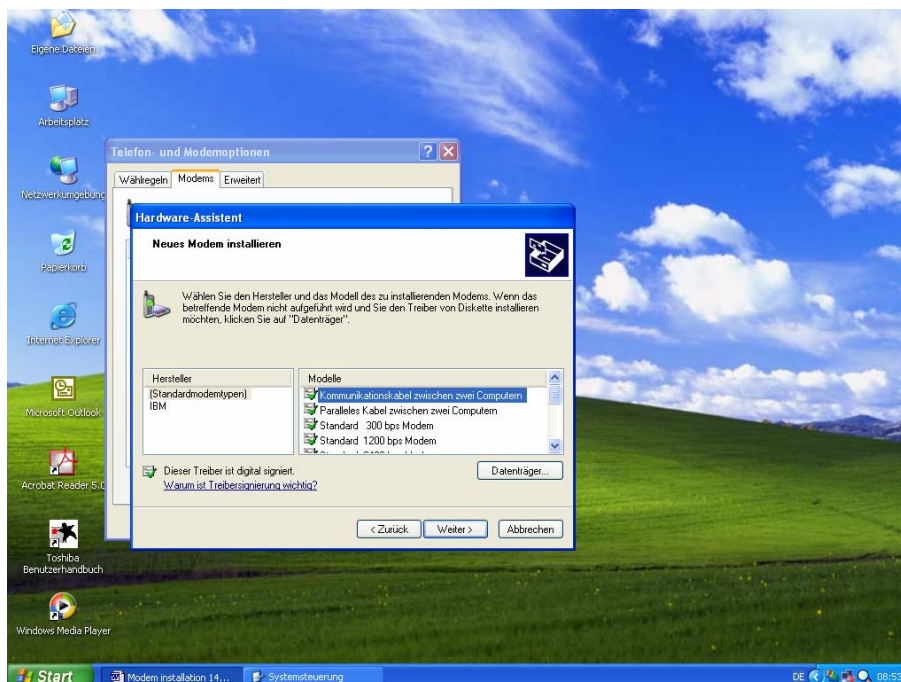




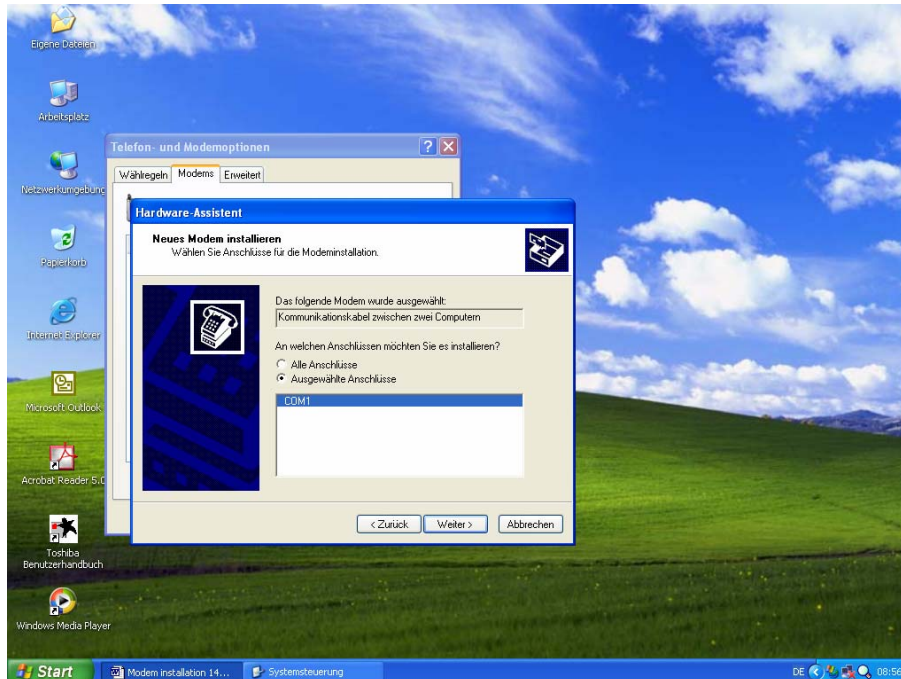
Select and activate in the window „installing new modem“ the icon „modem select“ (it must be indicated by a hook). After that going on in the process and press the button „continue“.



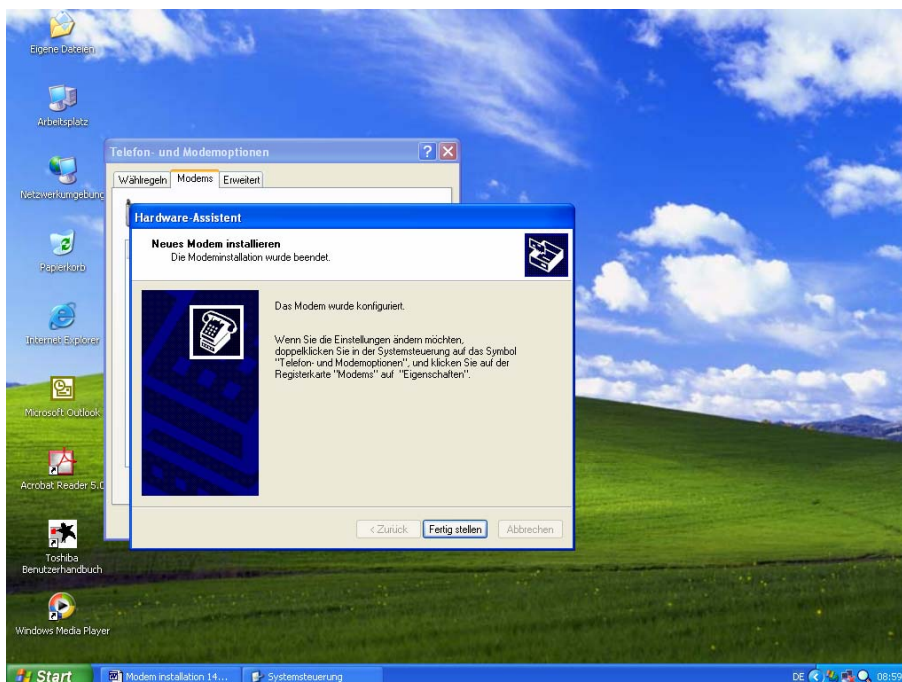
Don't change anything in the selection menu „Manufacturer“ and select in the window „models“ the modem „communication cable between two computers“. After that activate the button „continue“.



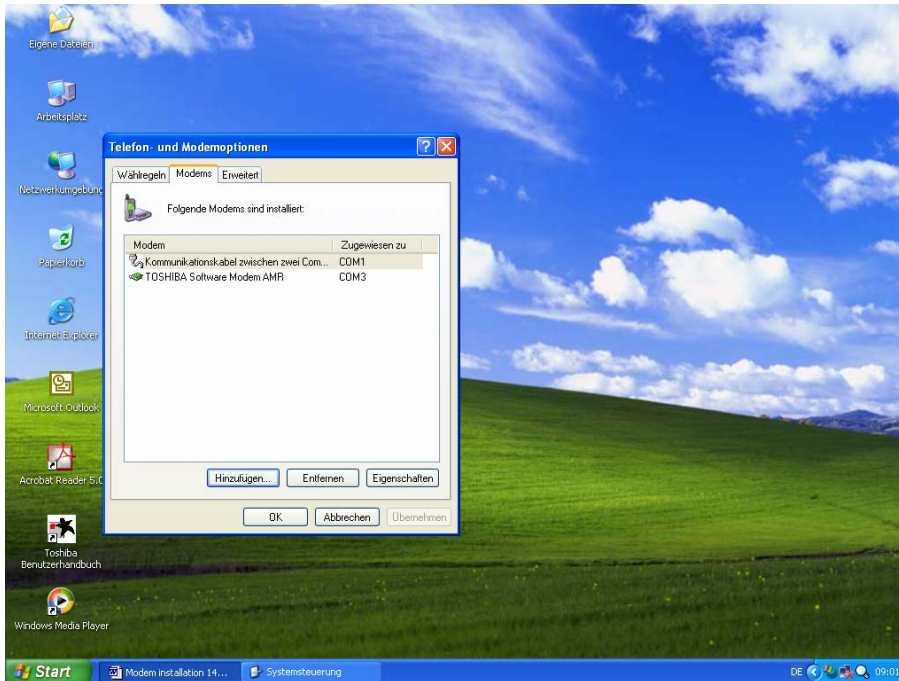
Activate in the next window the menu „selected connections“ and the connection the cPos should be attached (e.g. COM1). After that activate the button „continue“.



Now it indicates that all settings for the modem are done. In order to finish the setting you have to activate the button „finish“.

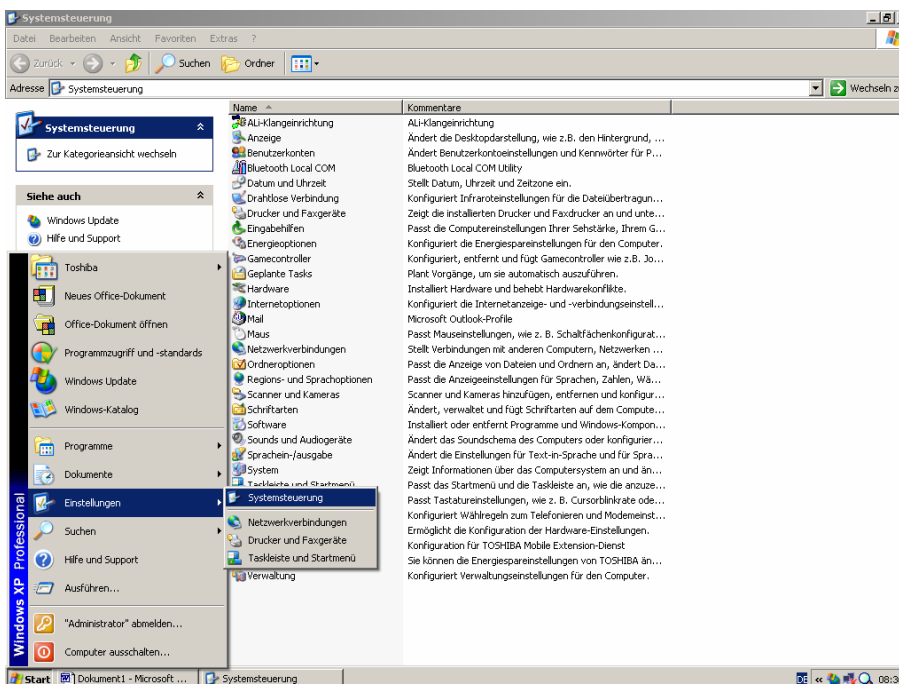


The new installed modem (e.g. COM1) it's indicated in the window „telephone and modem option“. After that confirm this and press the button „OK“.



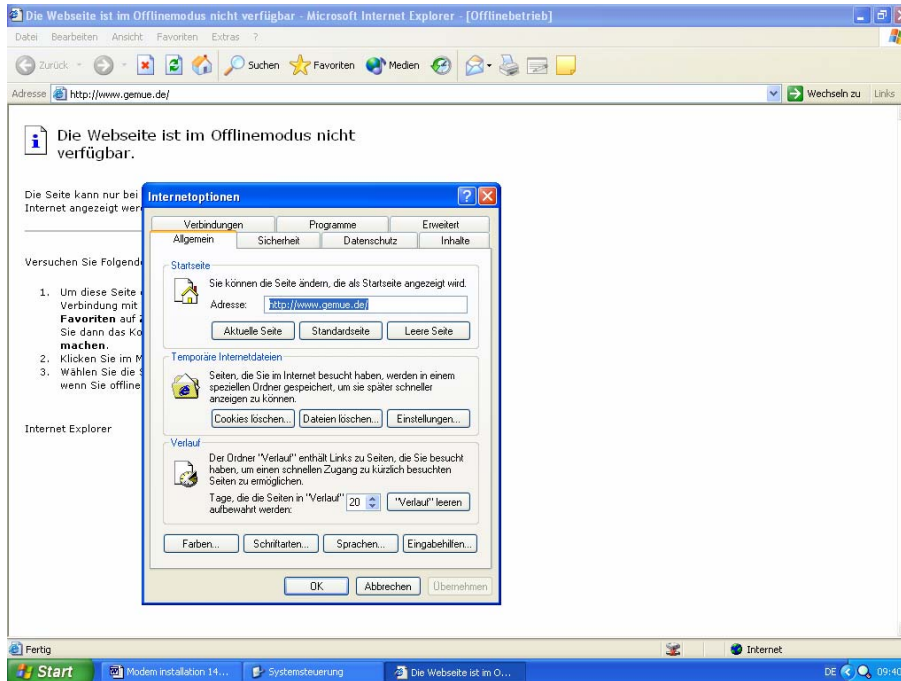
### 4.3 Setting-up of a server for the InterNet Browser.

Select in the window „System control“ the icon „Internet options“ to activate this icon „internet options“.

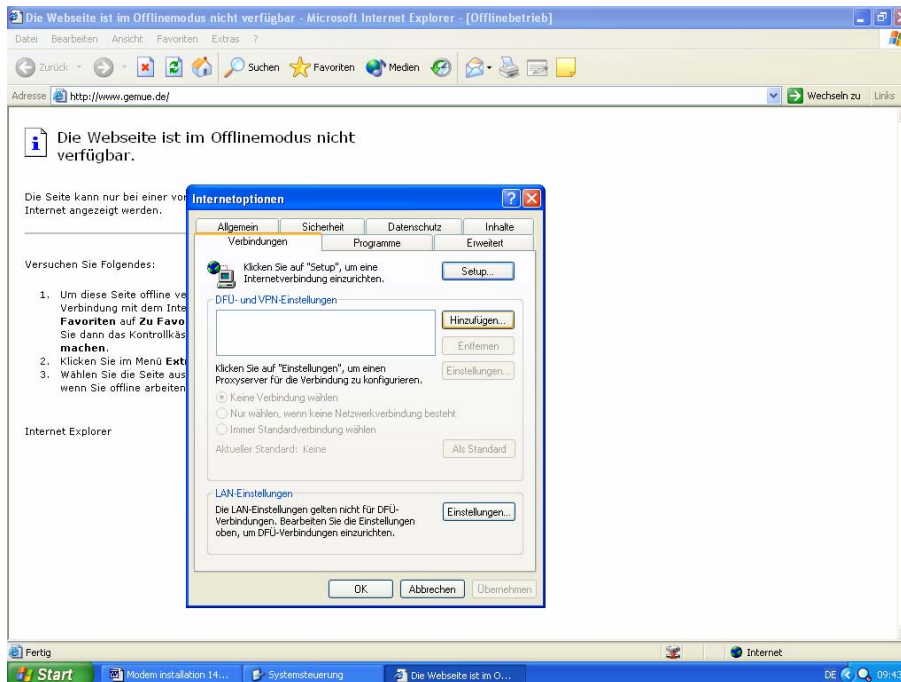




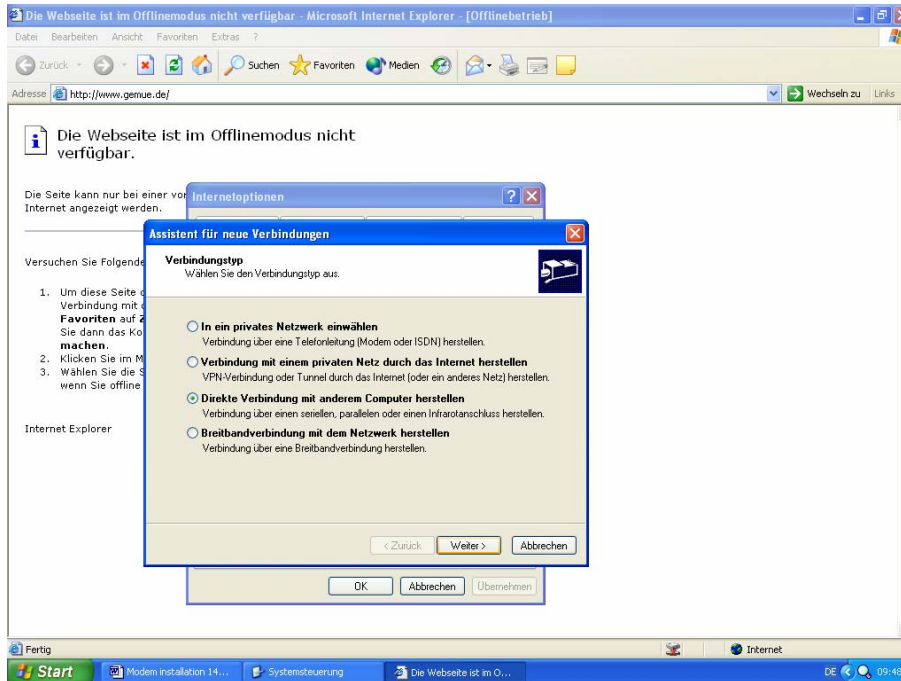
Register in the field „Start“ an internet address (e.g. [www.gemue.de](http://www.gemue.de)) and select the icon „connection“.



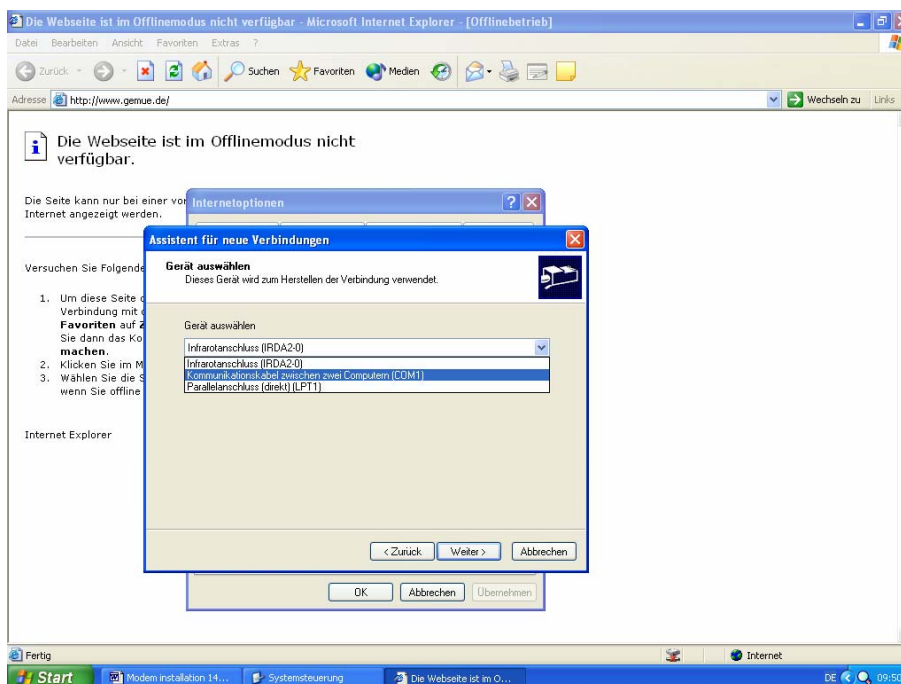
Operate in the register „connections“ the button „adding“.



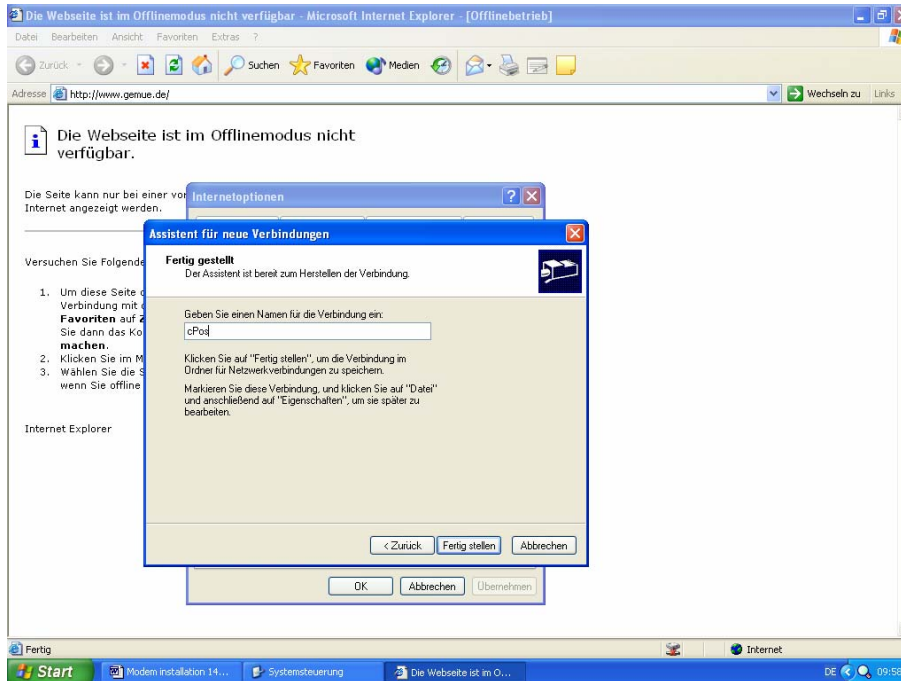
Select in the window „connection type“ the connection „direct connection with other computers“ and press the button “continue“.



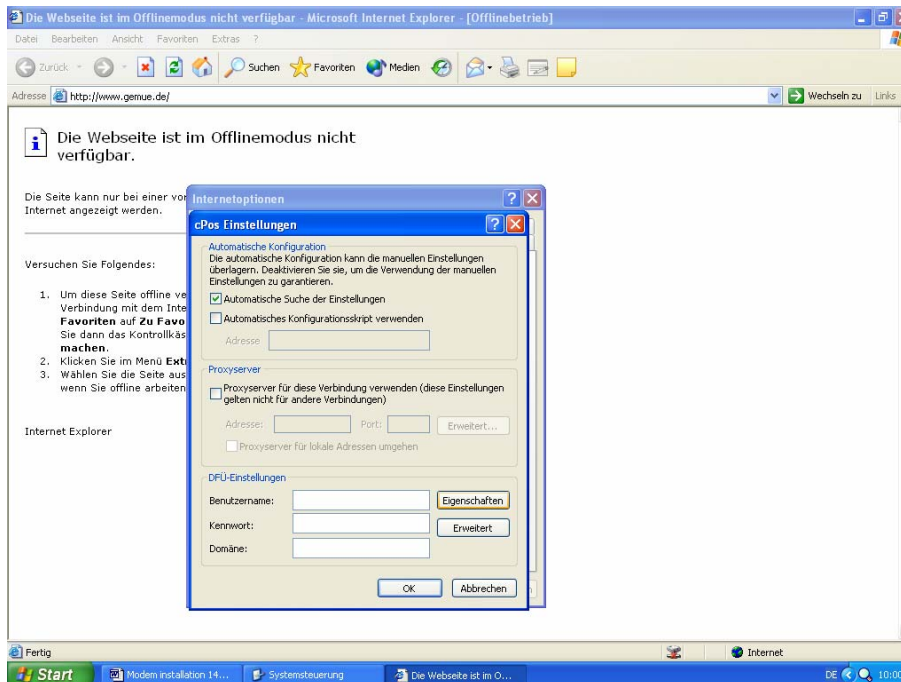
You have to choose in the window „select device“ the device „communication cables between two computers“ and then you have to press the button “continue“.



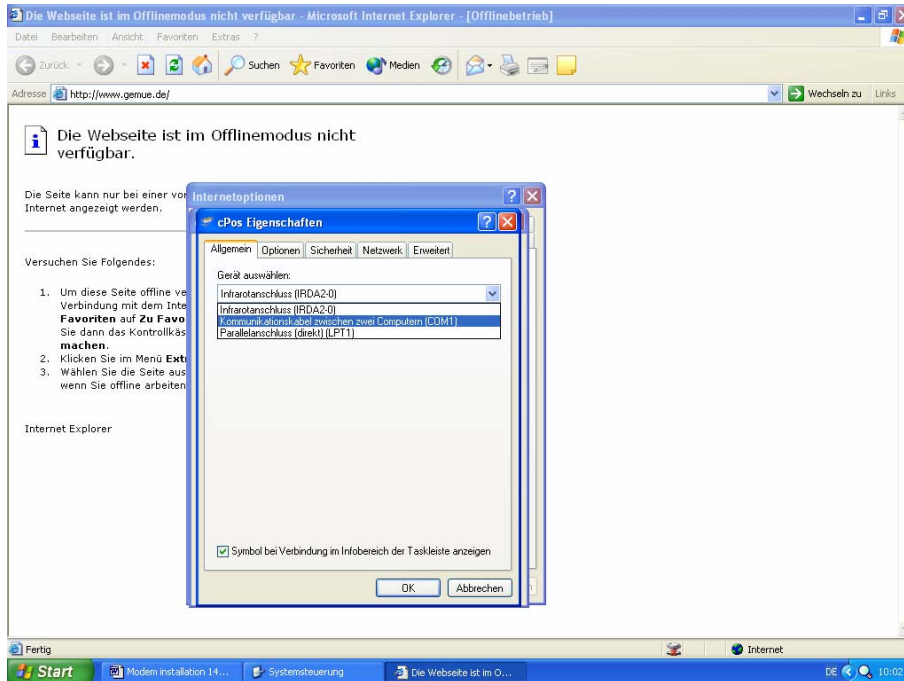
Allocate in the window „Finished“ a name for the connection. For example: cPos.  
After that activate the button „Finishing“.



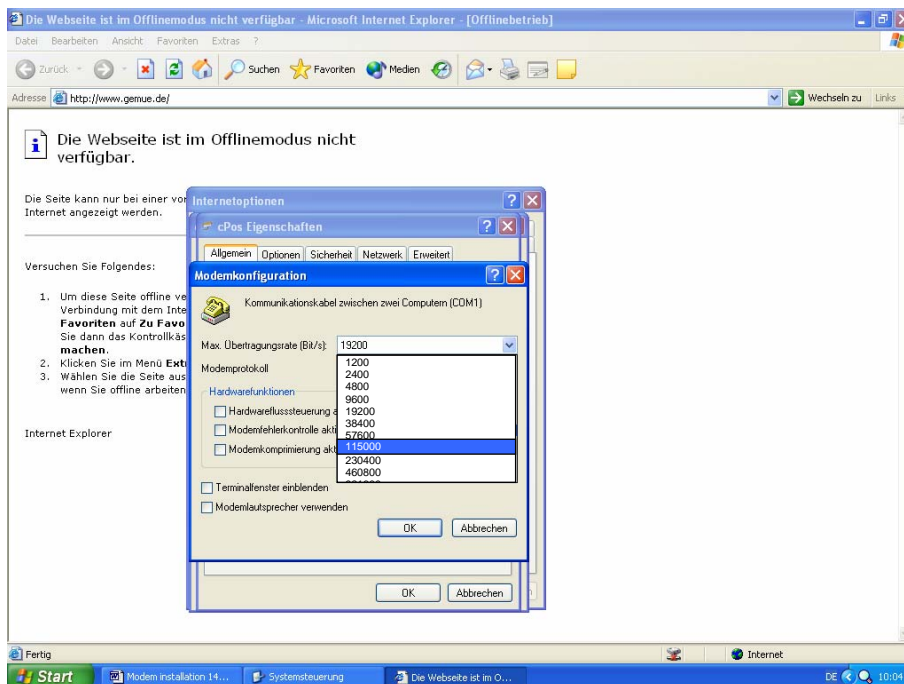
Activate in the window „cPos setting“ the button „characteristics“.



Select in the register „general“ the advice „communication cabel between two computers“ and press the button „configuration“.

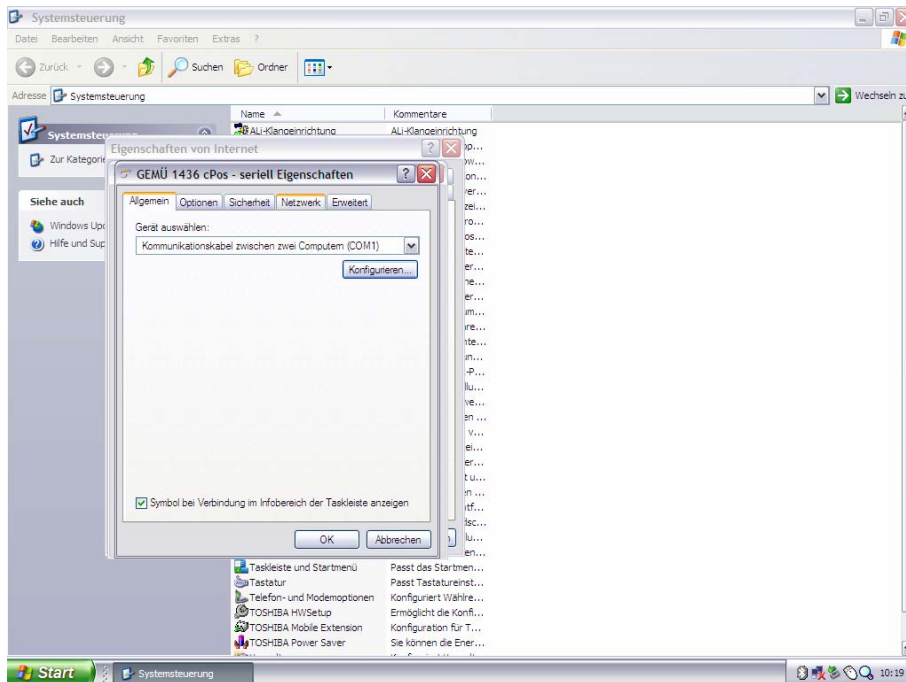


Select in the window „modem configuration“ the max. baud trate of 115000 (Bit/s) and take off the hook at the button „activate hardware control“.  
After that operate the button „OK“.

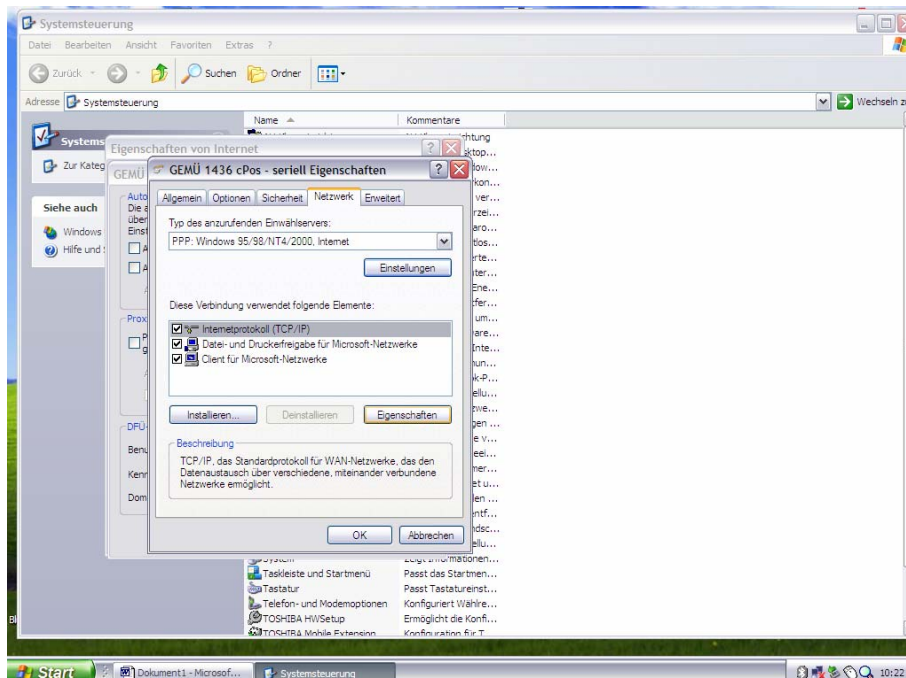


Close after that the window by pressing the button „OK“.

Select the register „network“ .

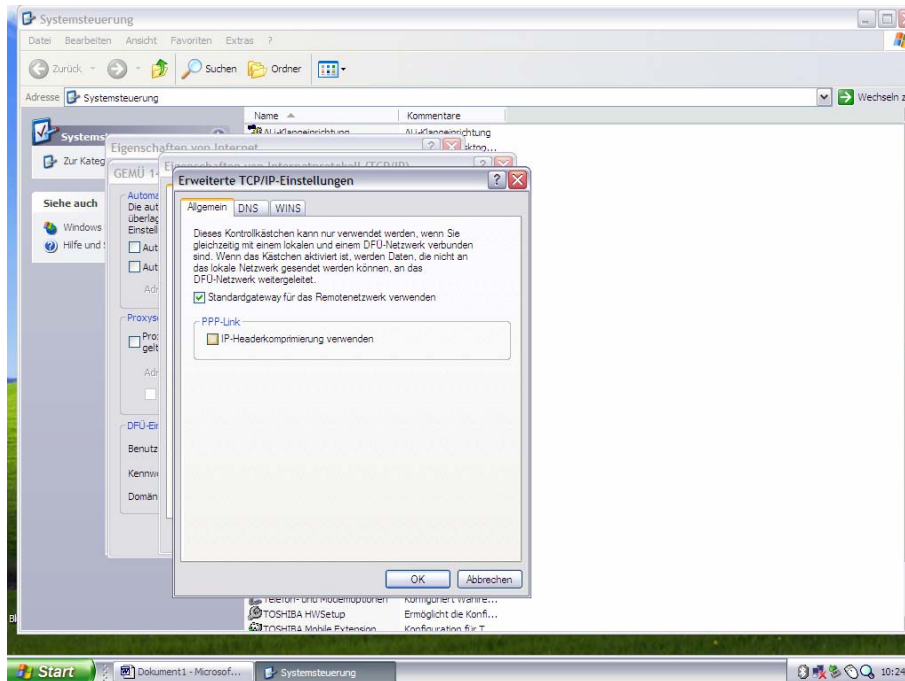


Select in the register „network“ the advice „Internetprotocoll“ and press the button „configuration“.





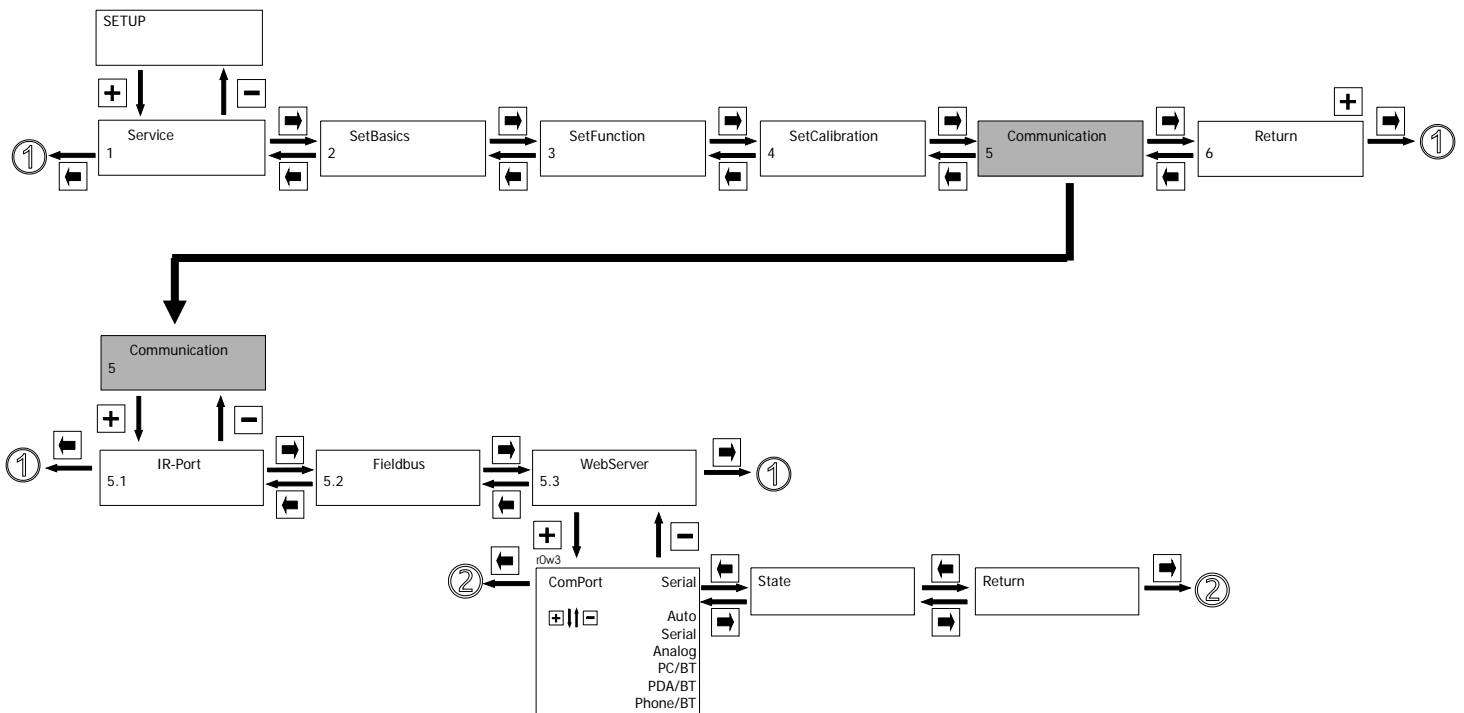
Take off the hook at the button „IP Headercompiling“.  
After that operate the button „OK“.



Close after that all windows by pressing the button „OK“.

### 4.4 Setting connection at GEMÜ 1436 cPos

In order to make a connection via a serial cable with a PC and the GEMÜ positioner 1436 cPos you have to do the following steps:



#### Communication:

Main menu for the selection of the connecting options.

#### WebServer:

Submenu for adjusting the communication parameter.

#### ComPort:

Defines the kind of the communication connection.

Setting:      Serial      If you use a connection via serial cable with a PC/Laptop and a baud rate of 115200 kbit/s

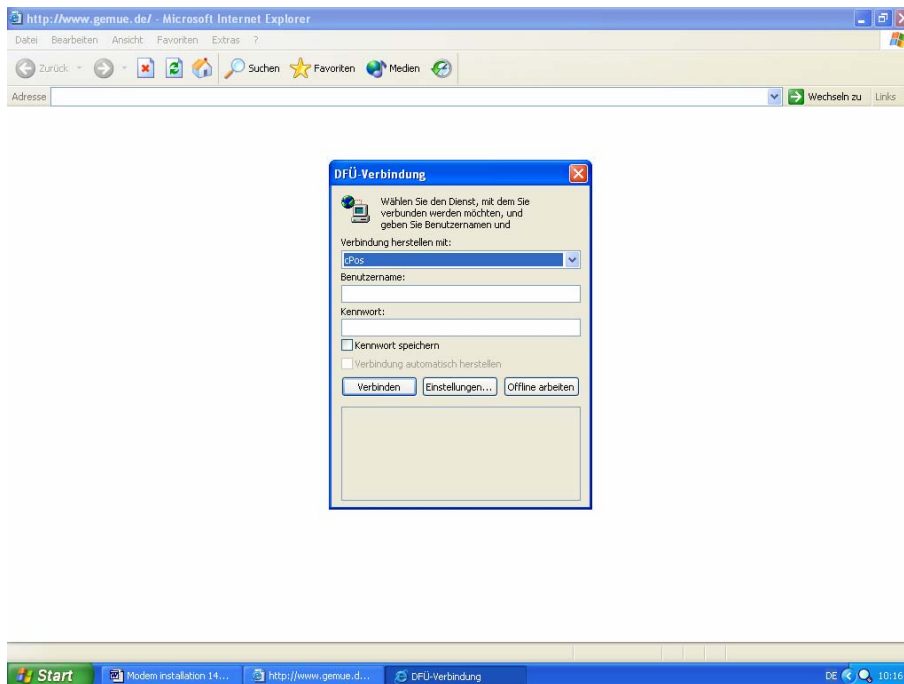
#### State:

Shows the actual status of the connection

Message:	No Modul	no communication modul connected
	Init	the connected communication modul is in initialisation
	Init OK	the communication modul is correctly initialized
	Connect	The connection works

## 4.5 Take up the connection with GEMÜ 1436 cPos

In order to make a connection with the GEMÜ 1436 cPOS, open the Internet Browser and select in the window „data communication connection“ the connection cPos and press the button „Connection“.



the next step the GEMÜ positioner 1436cPos announced itself with the following starting screen.



## **5 Installation instruction of a serical connection with a industry modem**

### **5.1 System settings**

#### **Internet Browser**

Microsoft Internet Explorer V5.5

Opera V8.0

Firefox V1.04

Netscape V7.1

#### **Operating system**

Windows NT

Windows XP/2000

### **5.2 Connect the modem with GEMÜ 1436 cPos**

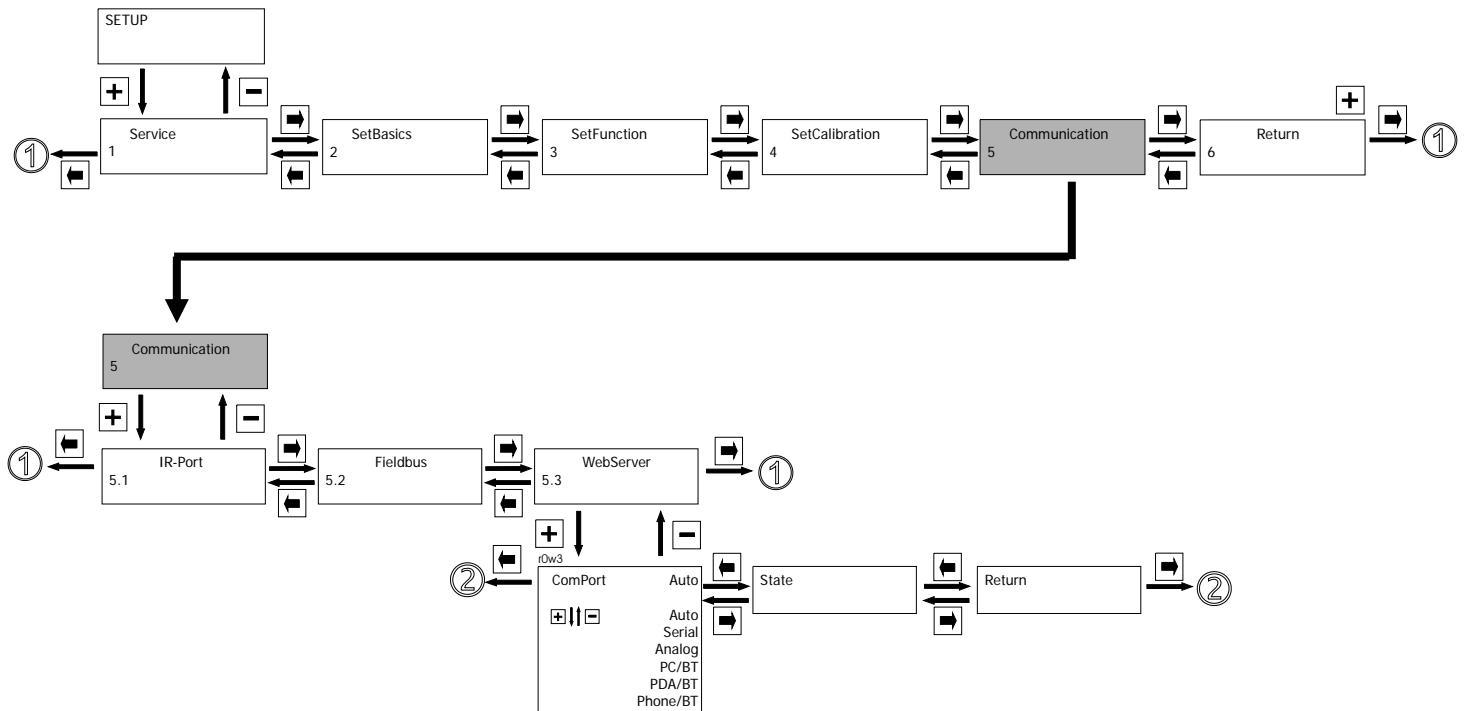
**In order to have a telecommunication connection of GEMÜ 1436 cPos and a PC via a industry modem , you have as follow to proceed:**

Close the industry modem as like descriped in the attached chapter **3.1 „modem connection - serial“** at the GEMÜ 1436 cPos.

Switch the modem on.

### 5.3 Setting the connection on the GEMÜ 1436 cPos

In order to make a connection via a industry modem with a PC you have to do the following settings at the GEMÜ 1436 :



#### Communication:

Main menu for the selection of the connecting options.

#### WebServer:

Submenu for setting the communication parameter

#### ComPort:

Defines the kind of the communication connection

Setting:	Auto	when using components who are specified by GEMÜ (Stollmann® Bluetoothmodul RS+E, Multitech® Industriemodem)
	Analog	when apply a industry modem which use the complete AT-command sentence

#### State:

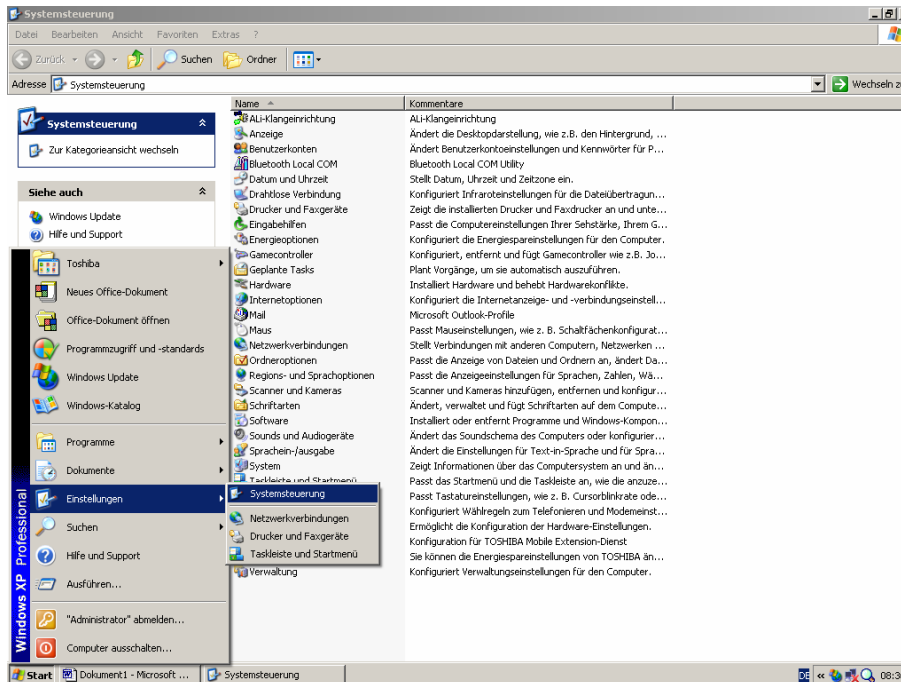
Shows the current connection status

Message:	No Modul	no communication modul connected
	Init	the connected communication modul is in initialisation
	Init OK	the communication modul is correctly initialized
	Connect	The connection works

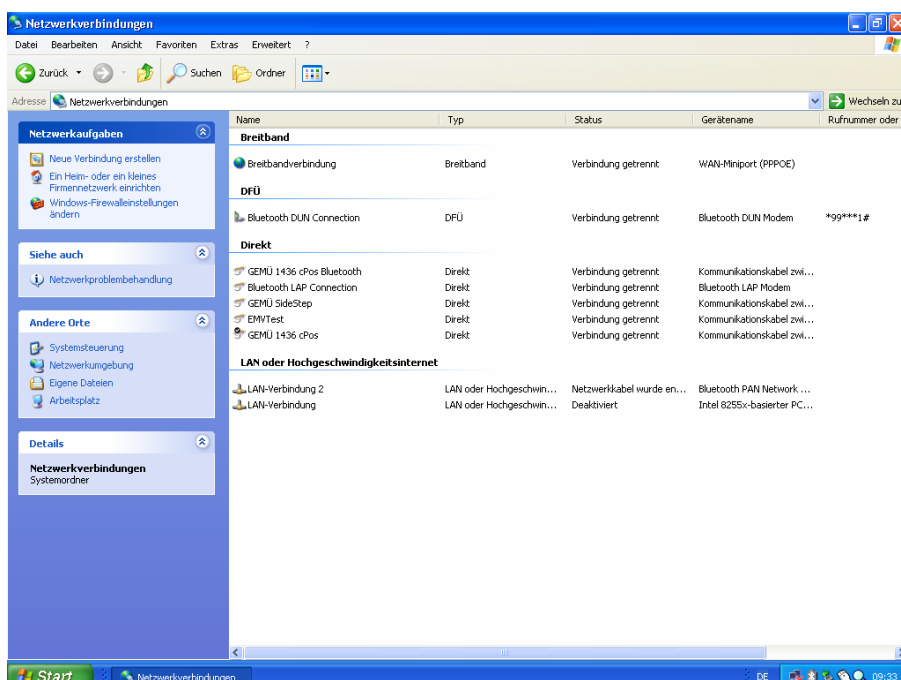
## 5.4 Setting-up of the network connection

To make a connection with the GEMÜ 1436 cPos, a modem must be geared on your PC. Proceed then as follows:

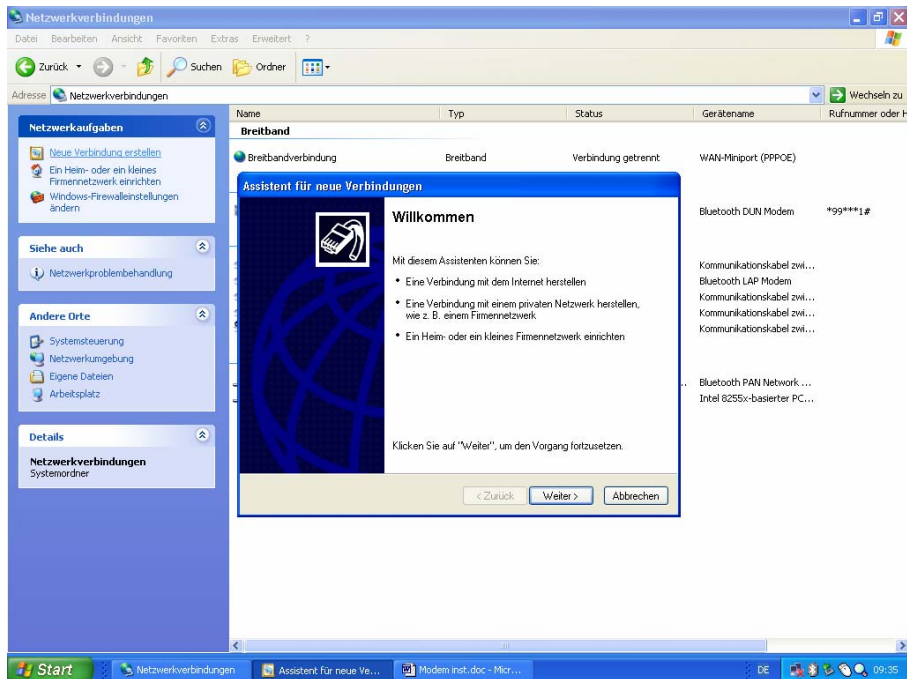
Select in the window „System control“ the icon „network connections“ to activate the window „network connection“.



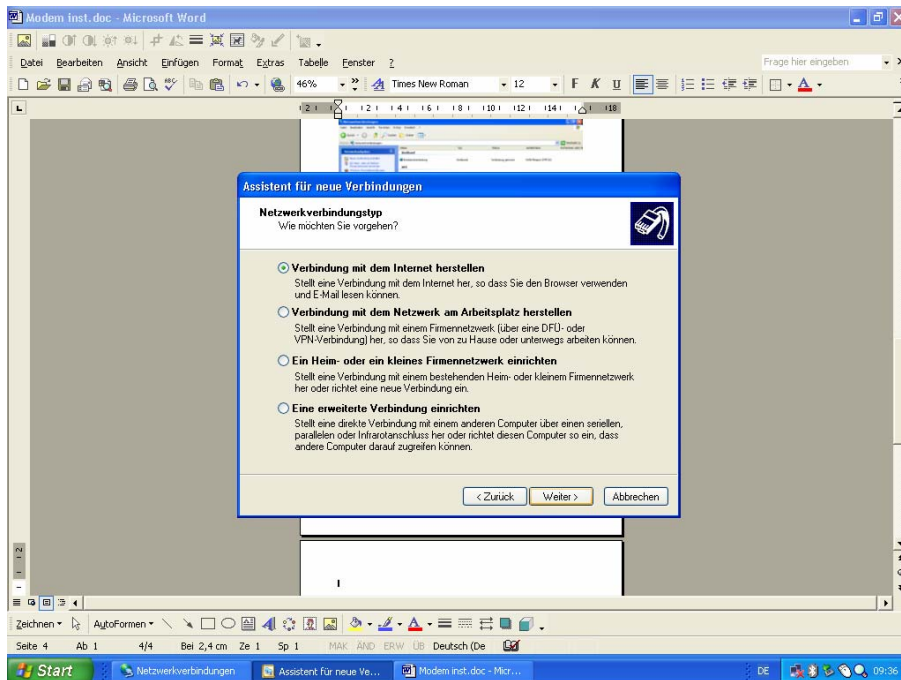
Select in the window „network tasks“ the field „new connection“.



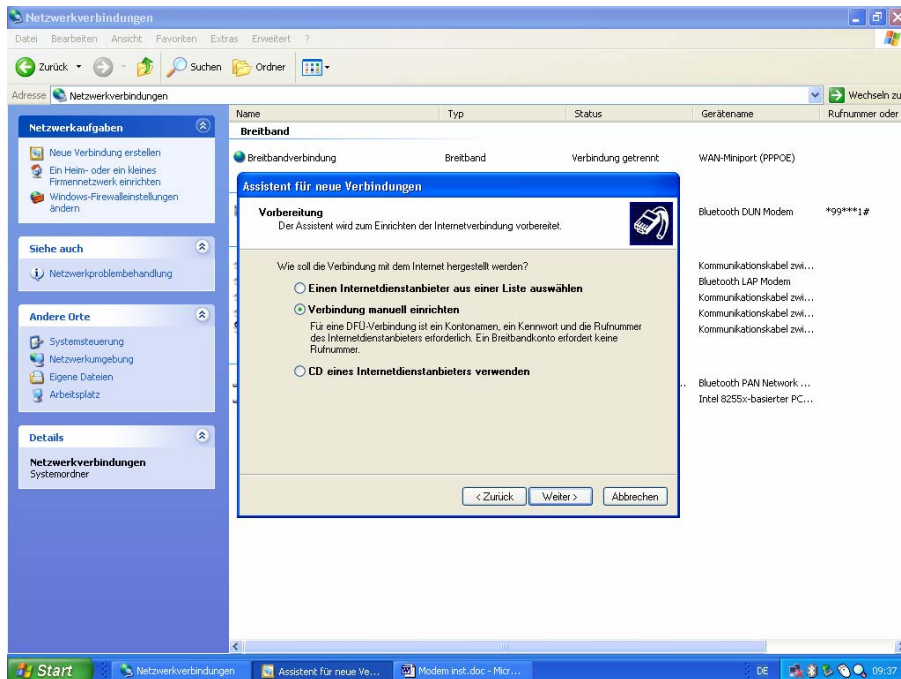
Press in the window „assistent for new connections“ the button „continue“.



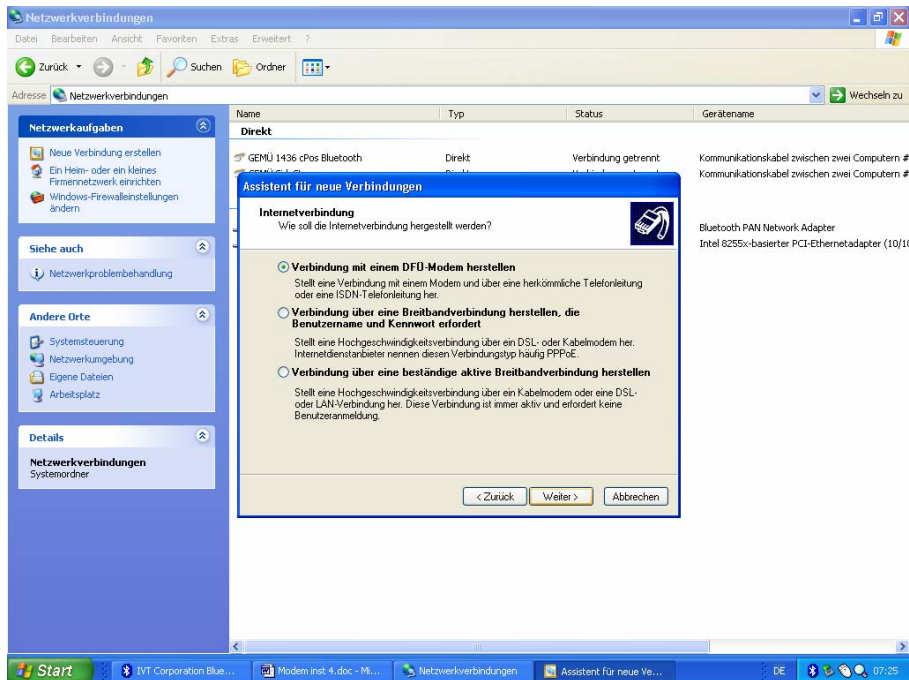
Mark the button „connecting with internet“ and enter the button „continue“.



Mark the button „connecting manual“ and press the button „continue“.

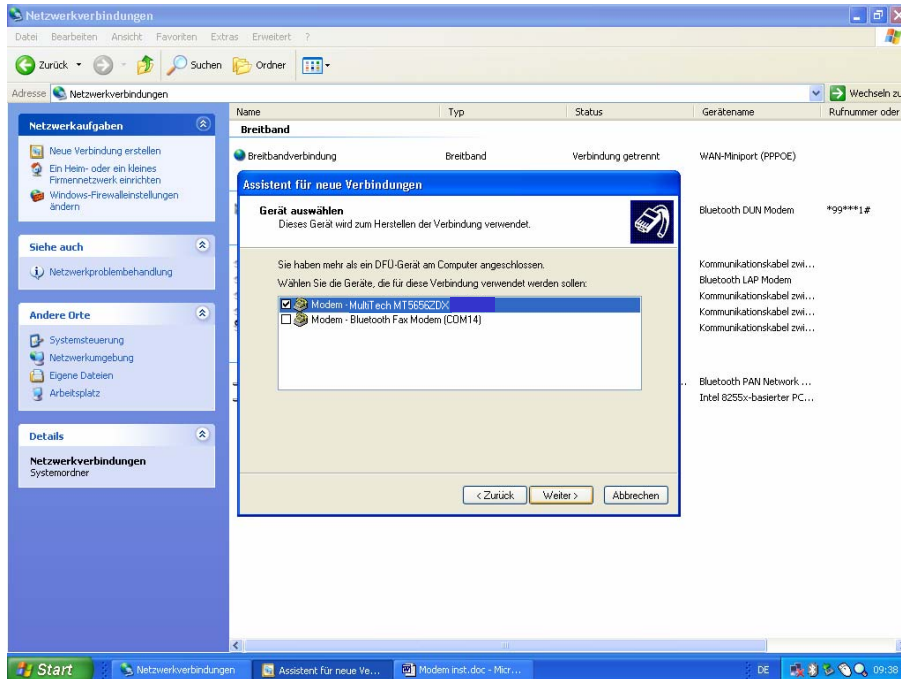


Mark the button „Connection via a data telecommunication-Modem“ and press the button „continue“.

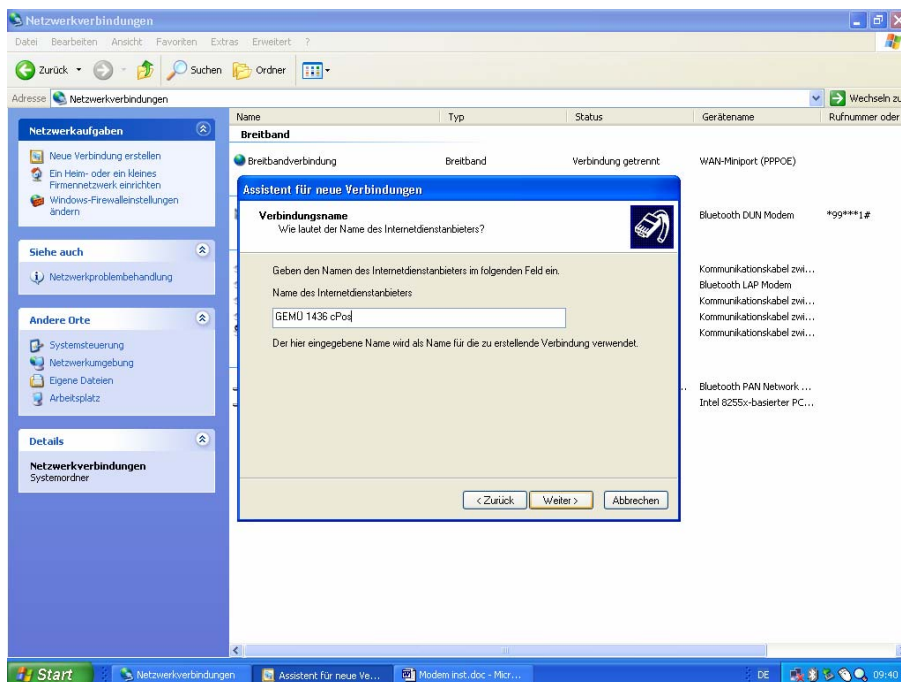




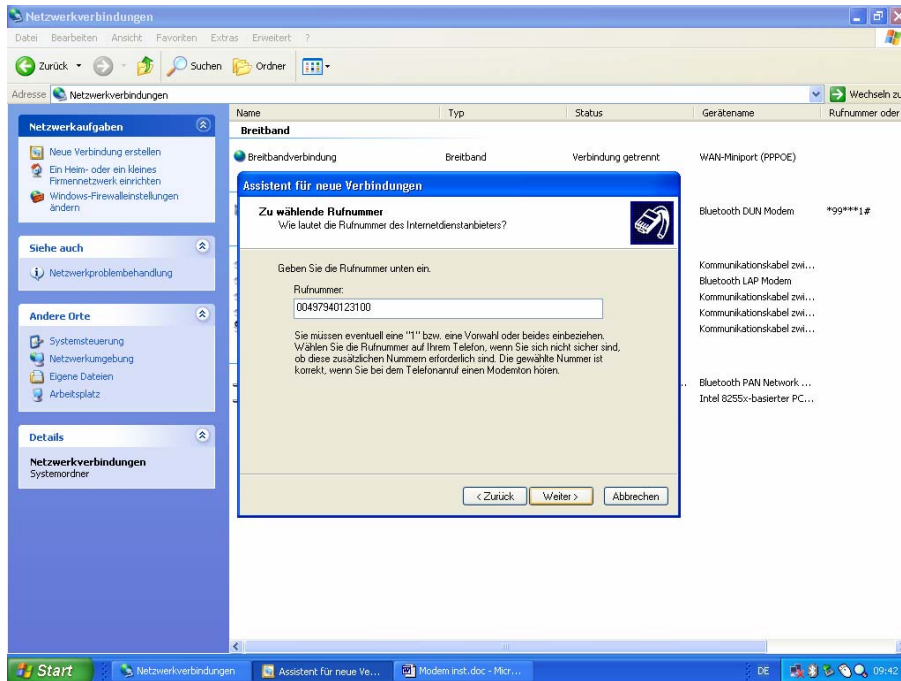
Select the modem which you want to use for the connection. After that press the button „continue“.



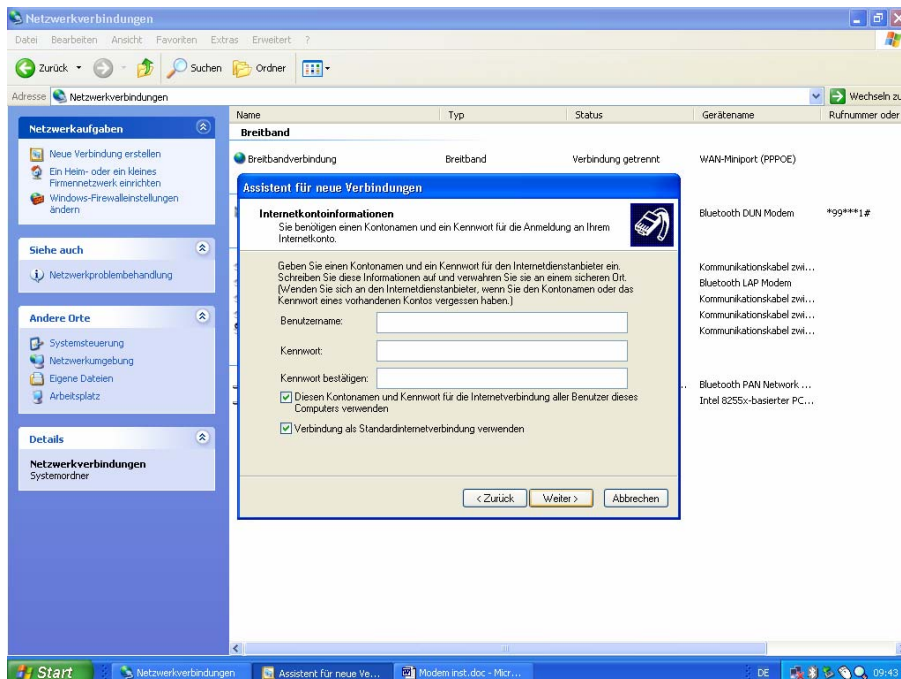
Type in the name for the connection in the field „Name of the internet provider“.



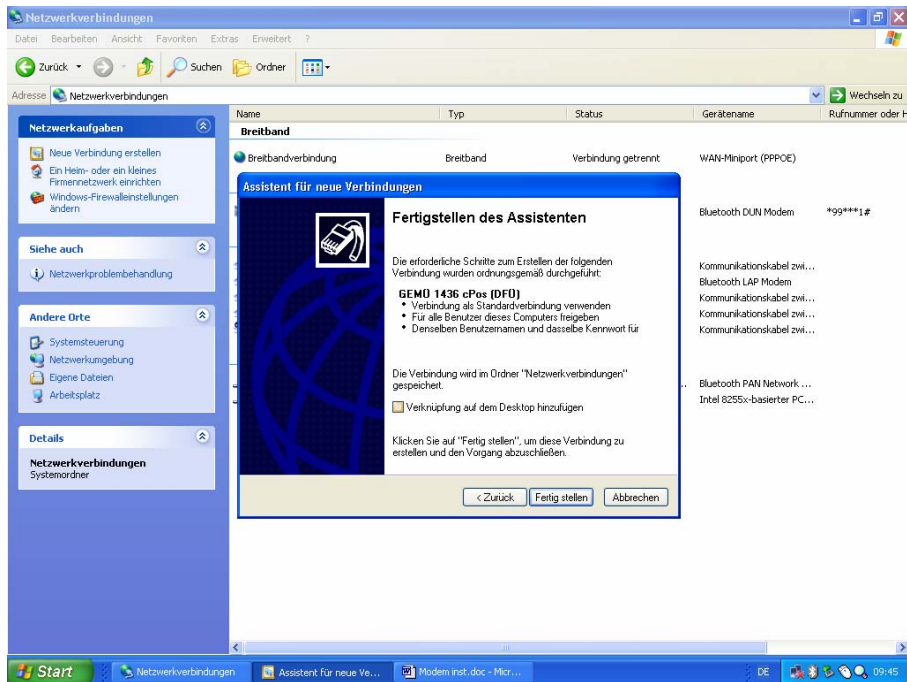
Type In the field „Telephonnummer“ the telephonenumber of the connection at which GEMÜ 1436 cPos should be connected on. You have to type the complete number, dialing code and telephone connection, evtl. with country code, without any blank.



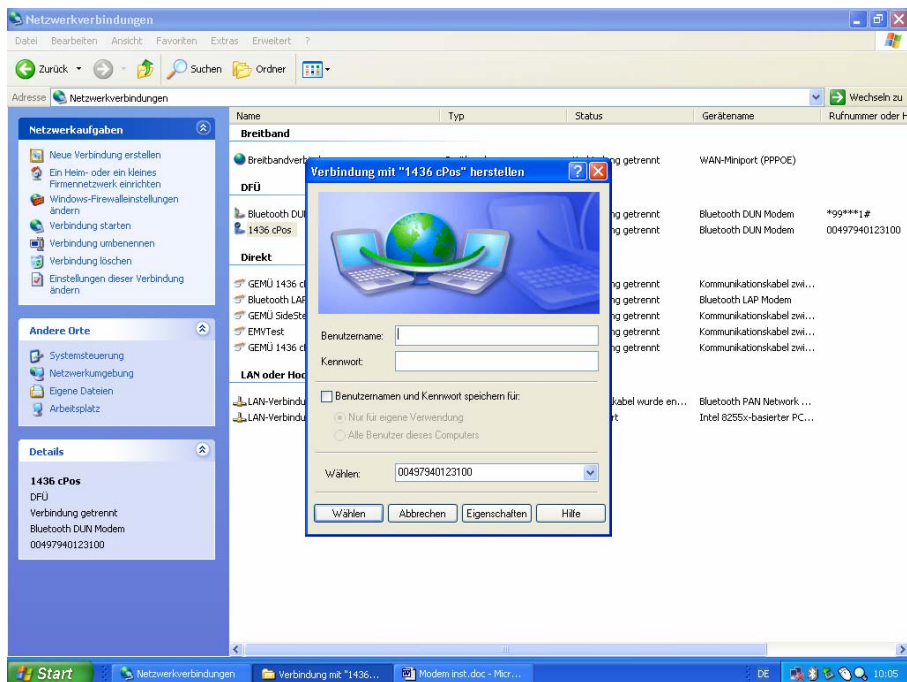
In the window „Internet account information“ have to be put in some inputs.



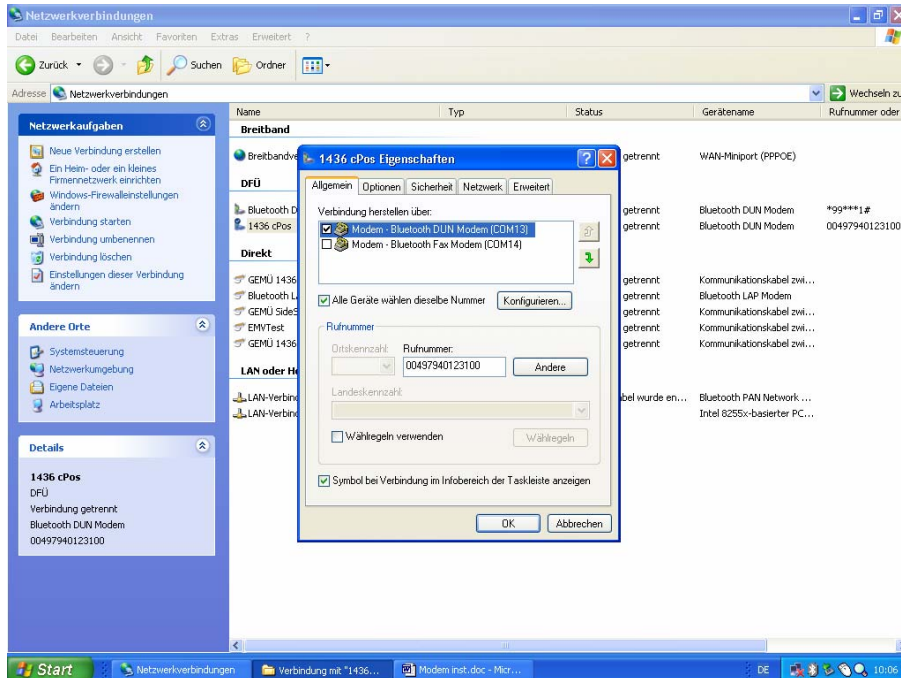
Next step: press the button „finish“ .



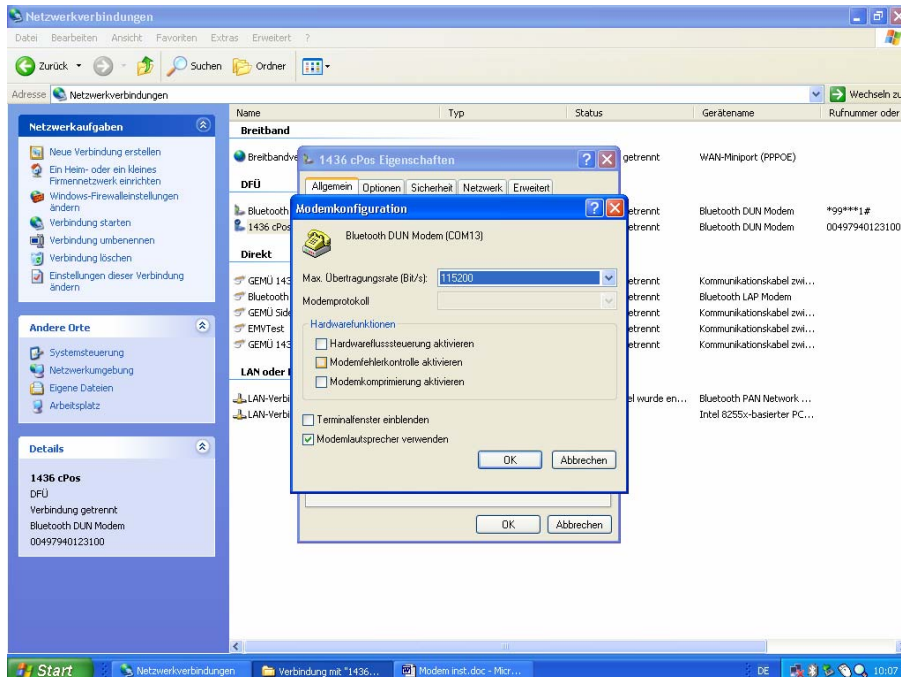
Press in the field „connections with ... “ the button „characteristics“.



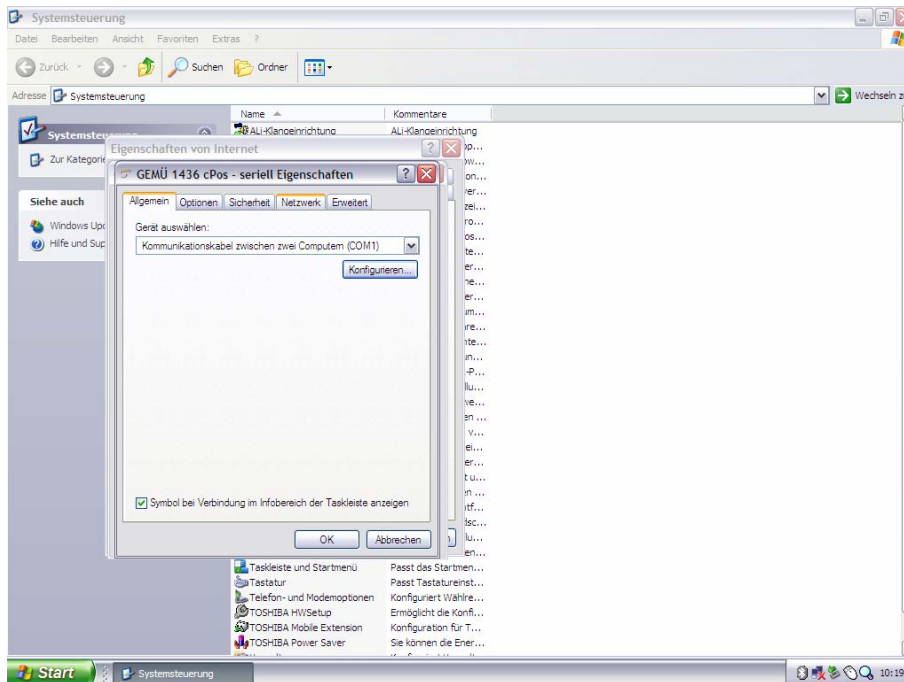
Select in the register „general“ the selected modem and press the button „configuration“.



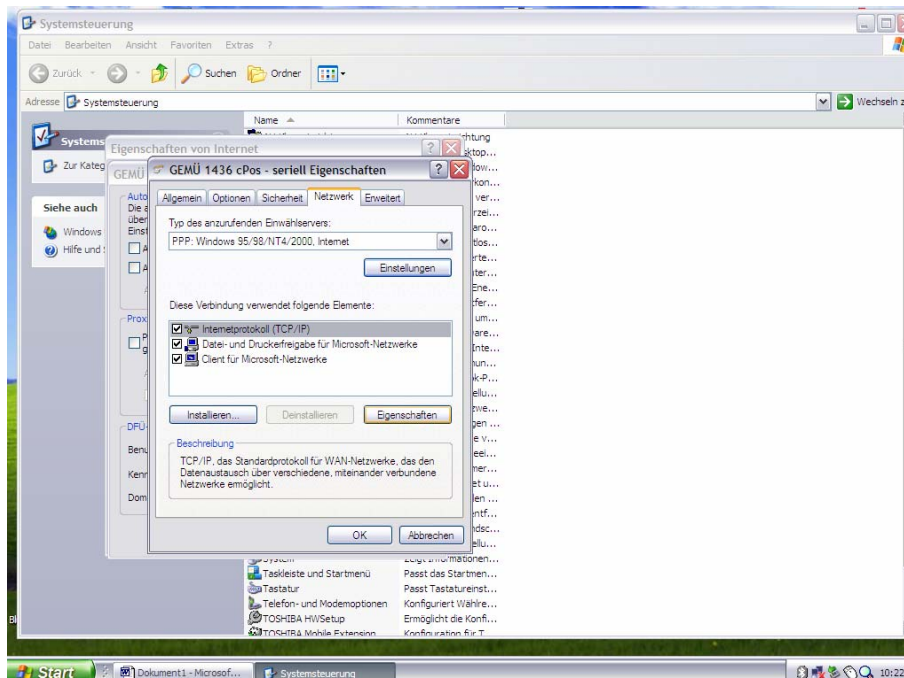
Set the max. baud rate of 115200 Bit/s.  
Don't select further options.  
Press the field „OK“ and close so the the window.



Select the register „network“ .

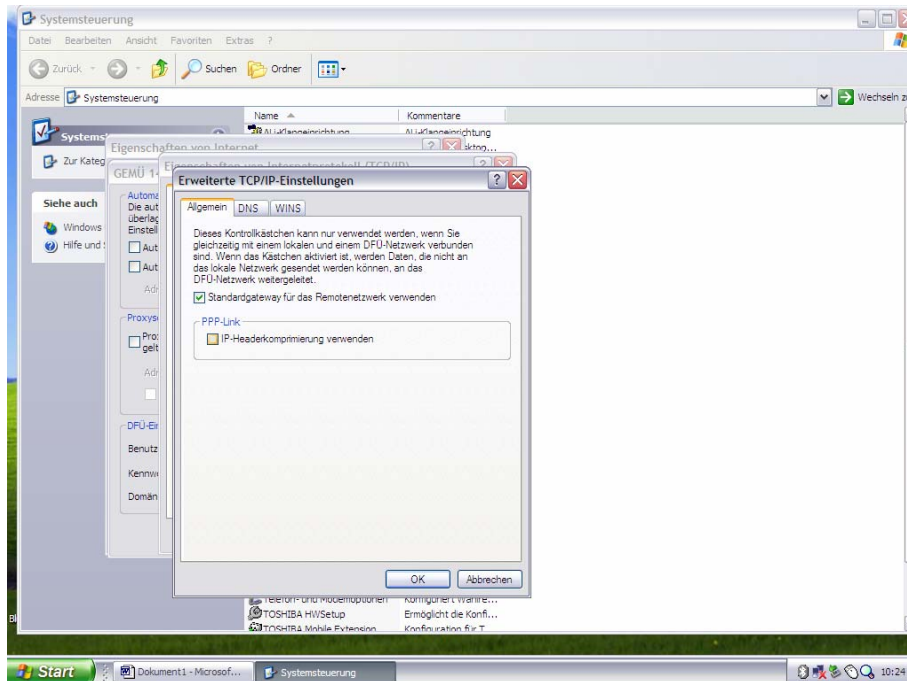


Select in the register „network“ the advice „Internetprotocol“ and press the button „configuration“.





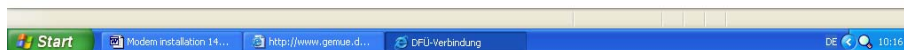
Take off the hook at the button „IP Headercompiling“.  
After that operate the button „OK“.



Close after that all windows by pressing the button „OK“.

## 5.5 Take up the connection with GEMÜ 1436 cPos

Open the Internet Browser and select in the window „data telecommunication connection“ the connection ..... and press the button „connection“ to get a connection with the 1436 cPos.



After that you get the following starting screen.



### 6 Installation instruction of a Bluetooth connection

#### 6.1 Connect the Bluetooth Modul at GEMÜ 1436 cPos

Connect the Bluetooth Modul via the also delivered power unit with voltage supply.

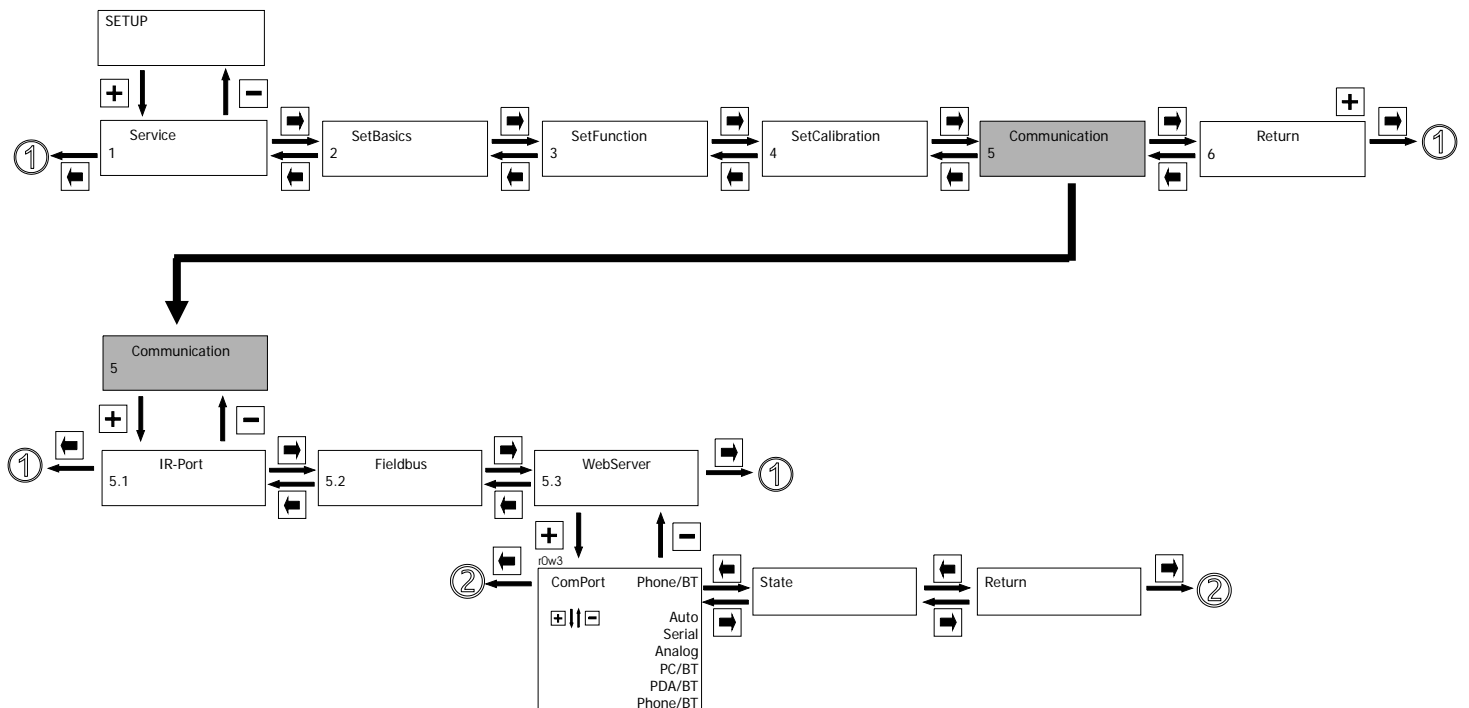
Wait till the red LED is off and the green LED lights.

Connect the Bluetooth modul as like discribed in chapter **3.3 Bluetooth connection** at the GEMÜ positioner 1436 cPos.

#### 6.2 Connection with a mobil phone via Bluetooth

##### 6.2.1 Setting the connection at GEMÜ 1436 cPos

You have to do the following setting at the GEMÜ 1436 cPos to have a connection with a mobilphone via a Bluetooth modul:





**Communication:**

Main menu for selection of the connection option

**WebServer:**

Submenu for setting the communication parameter

**ComPort:**

Defined the kind of the communication connection

Setting:      Phone/BT      If external Bluetooth moduls are used (Stollmann<sup>®</sup> RS+E)  
and you may have contact via a bluetooth-able  
Mobilphone (Nokia<sup>®</sup> 6310)

**State:**

Shows the actual status of the connection

Message:	No Modul	no communication modul connected
	Init	the connected communication modul is in initialisation
	Init OK	the communication modul is correctly initialized
	Inquiry	watching for a Bluetooth mobilphone
	Connect	The connection works

After you receive the message „Init OK“ in the parameter state the GEMÜ positioner 1436 cPos starts watching for a bluetooth able mobilphone.

To use this function you have to set the mobilphone in that status, that all Bluetooth users are visible.

The GEMÜ positioner 1436 cPos starts now to watch for mobilphones. As soon as he has a connection, the result has to be confirmed on the mobilephone.

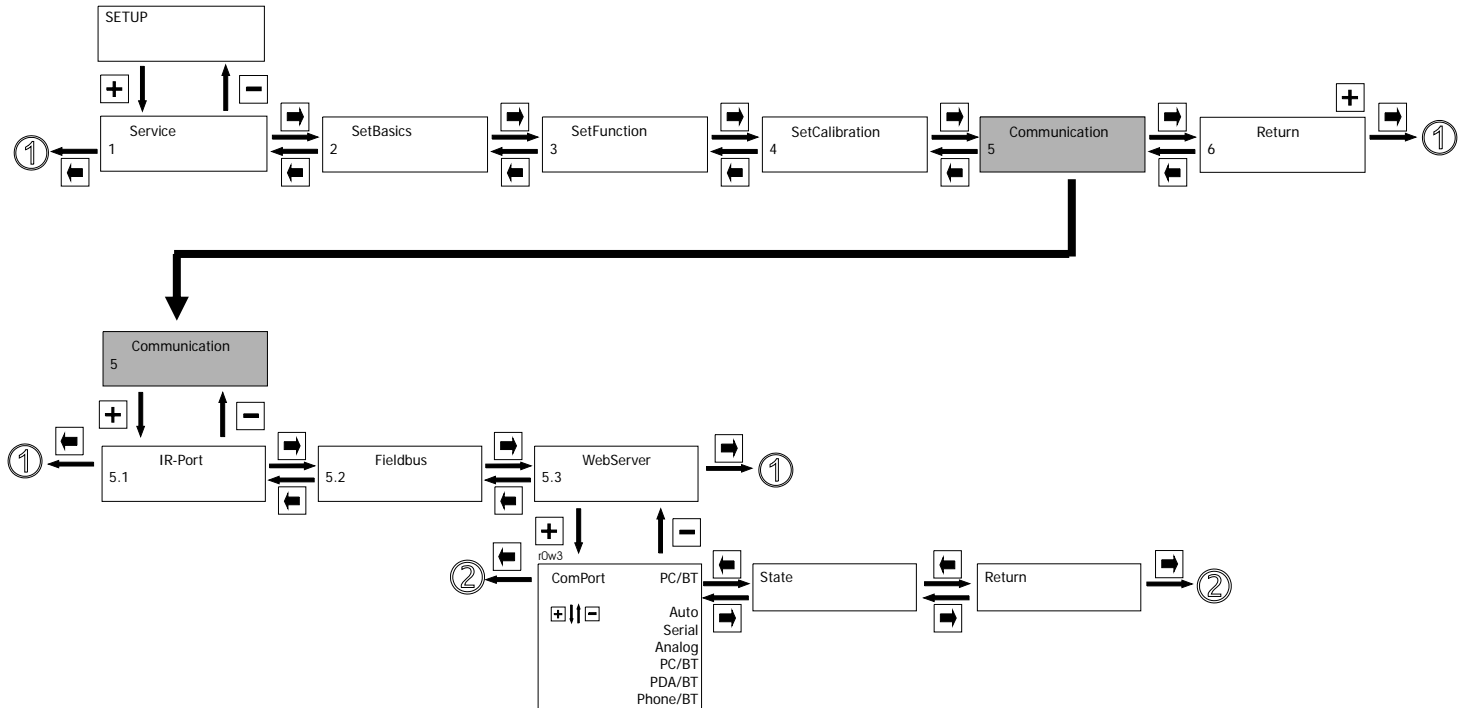
If now the mobilephone will be called by an PC with modem, the GEMÜ 1436 cPos connects automatically the connection between mobilphone and PC.

The long-distance access to the 1436 cPos is now possible.

### 6.3 Connection with a PC via Bluetooth

#### 6.3.1 Setting the connection at GEMÜ 1436 cPos

To have a PC connection via a Bluetooth modul you have to do the following settings at the GEMÜ 1436 cPos:



#### Communication:

Main menu for the selection of connecting options.

#### WebServer:

Submenu for setting the communication parameter

#### ComPort:

Defines the kind of the communication connection

Setting: PC/BT when external Bluetooth modules are used (Stollmann® RS+E) and you have contact via a bluetooth - able PC/Laptop

#### State:

Shows the actual status of the connection

Message:	No Modul	no communication modul connected
	Init	the connected communication modul is in initialisation
	Init OK	the communication modul is correctly initialized
	Connect	the connection works

When you received in the parameter state the message „Init OK“ you could connect the GEMÜ 1436 cPos via a bluetooth - able PC.

Proceed the next steps like in the operating instructions of your PC described.

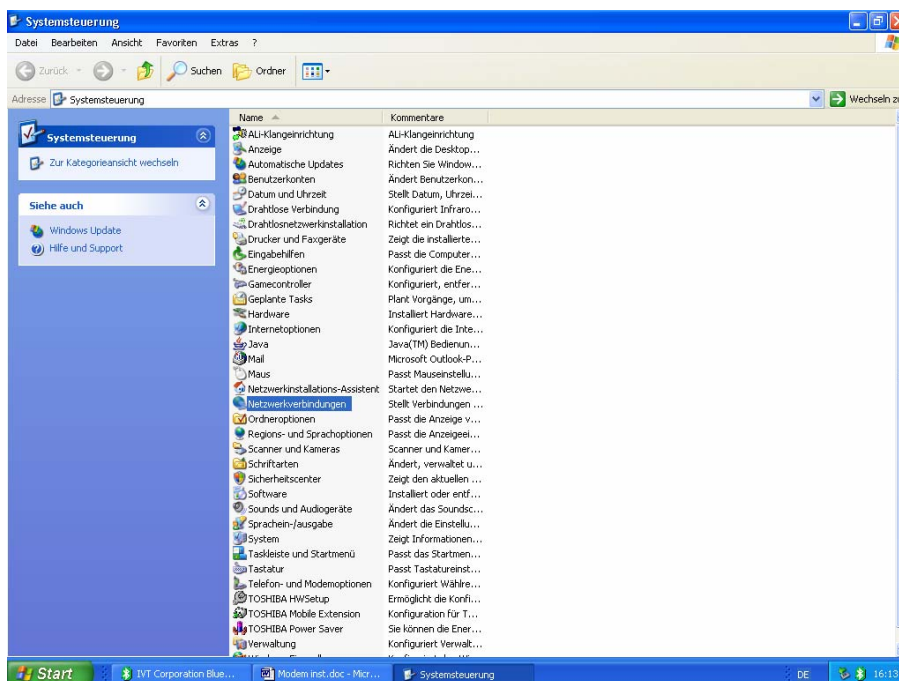
You get the utility „Serial Port“ after the GEMÜ 1436 cPos was detected.

You have to do a connection and type by the interrogate of the Pin Code the Code 0000 (factory setting).

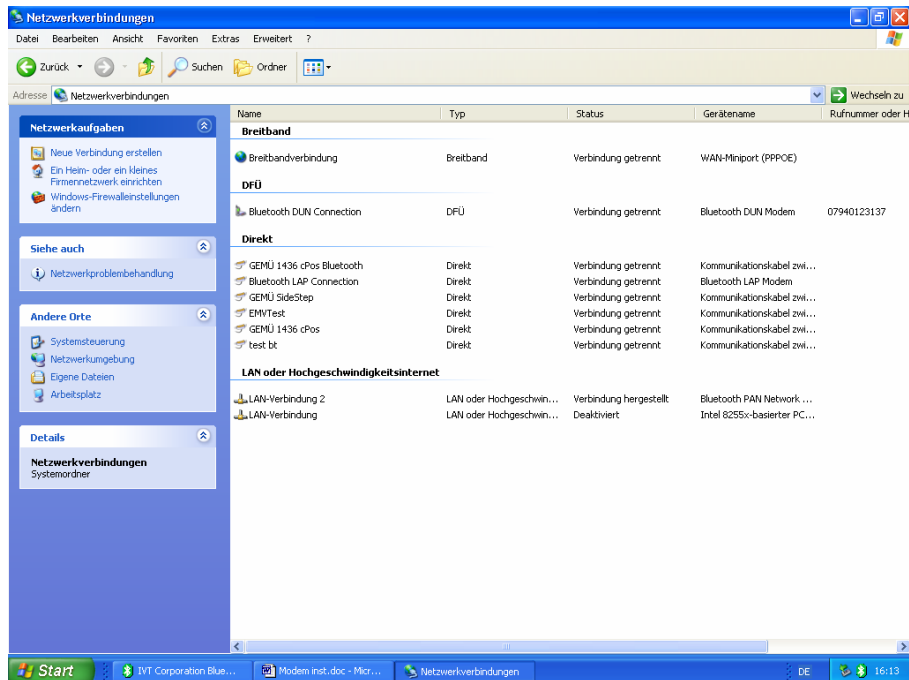
As soon as the connection works, you can see on the PC screen the COM Port.

### 6.3.2 Setting-Up of the network connection

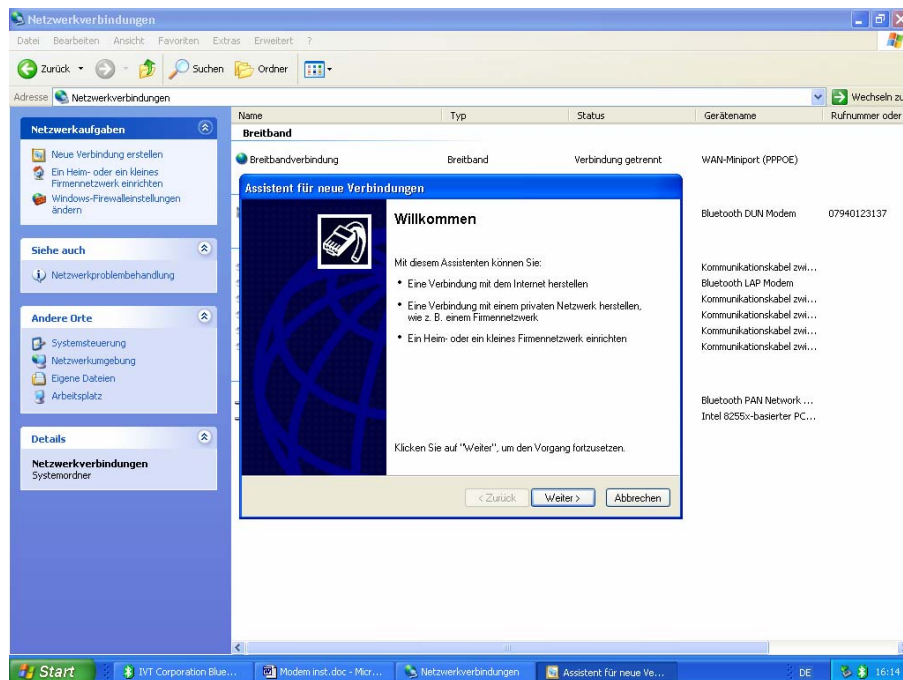
Select in the window „network connections“ the icon „network connections“ to activate the window „network connections“.



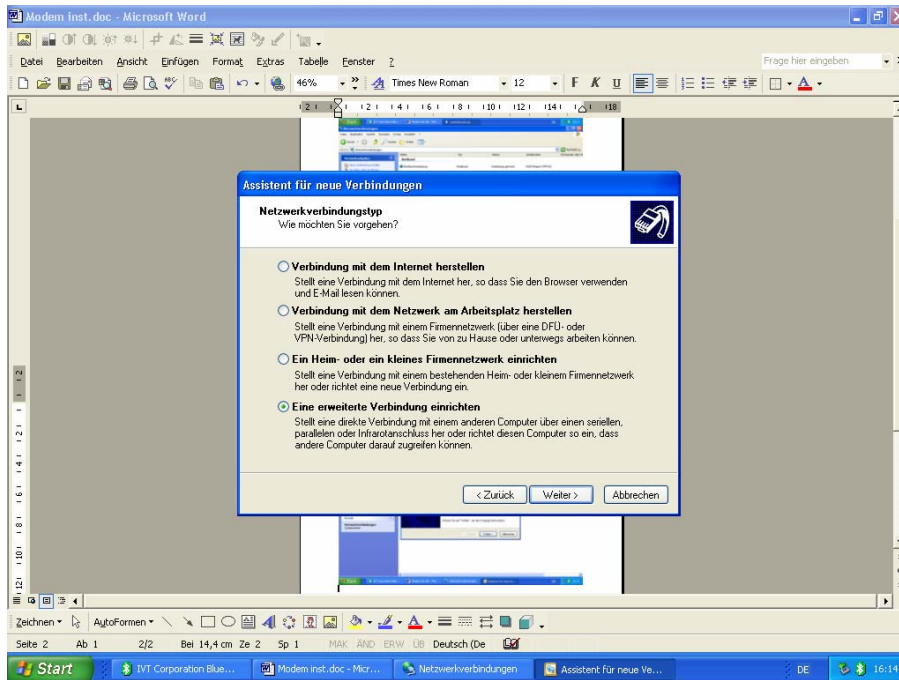
Select in the field networks tasks the field „new connections“



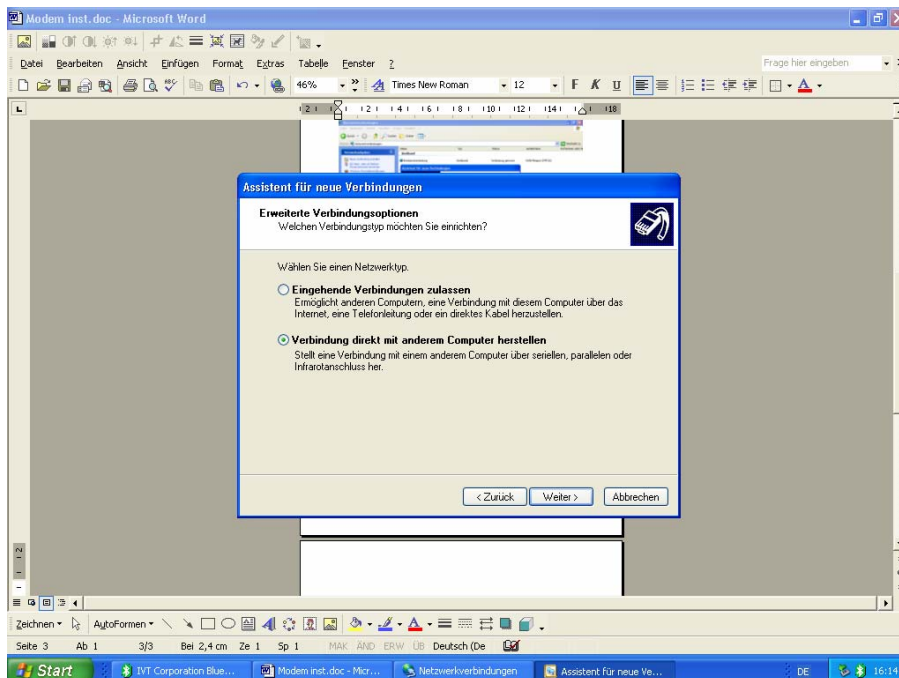
Press in the window „Assistant for new connections“ the button „Continue“.



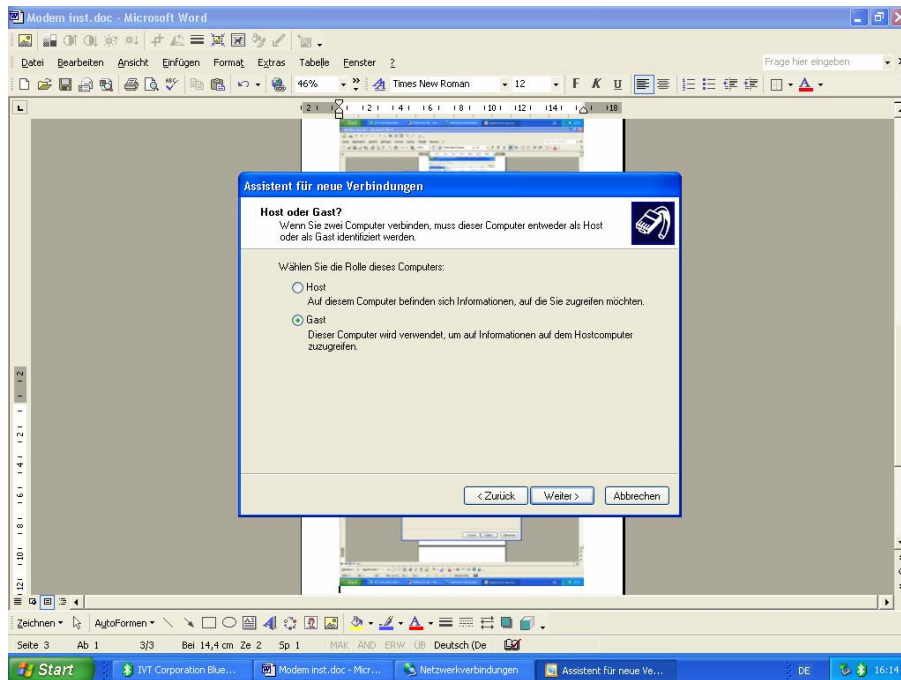
Mark the field „further connections“ and press the button „Continue“.



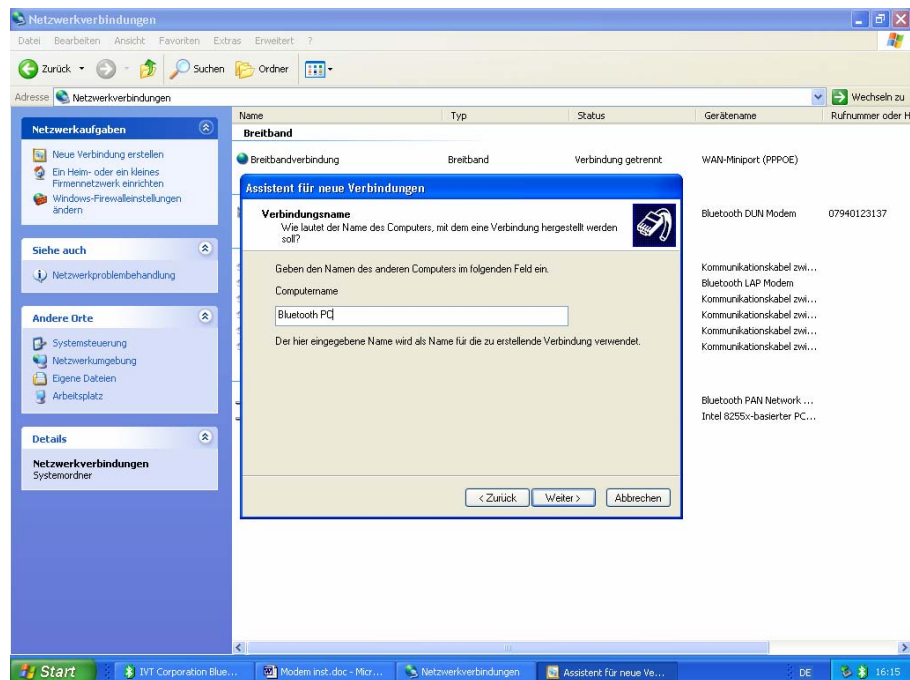
Mark the field „direct connections with other computers“ and press the button „continue“.



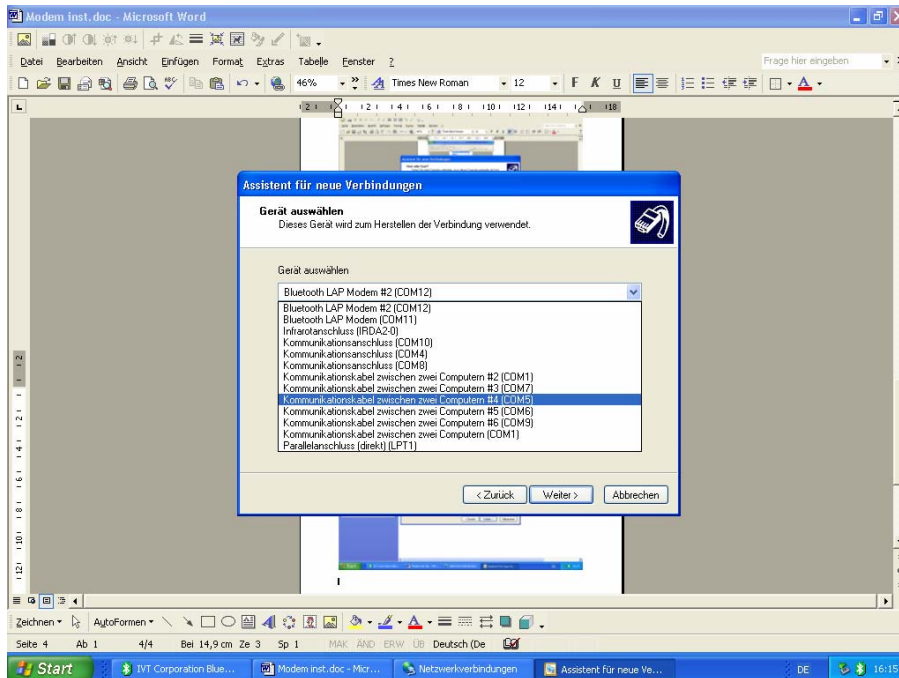
Mark the field „guest“ and press the button „Continue“.



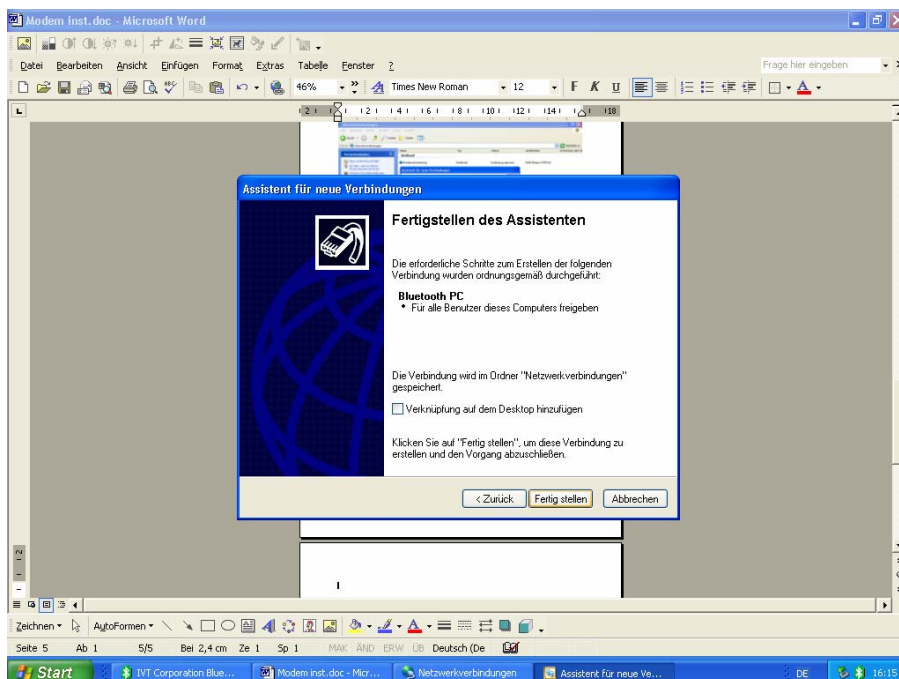
Now you have to name these connection, e.c. „Bluetooth PC“ and to press the button „continue“



Now you have to select the COM-Port, which there the Bluetooth connection have to proceed. The COM-Port was named by activating the Bluetooth connection (page 35). Now you have to press the button „Continue“.

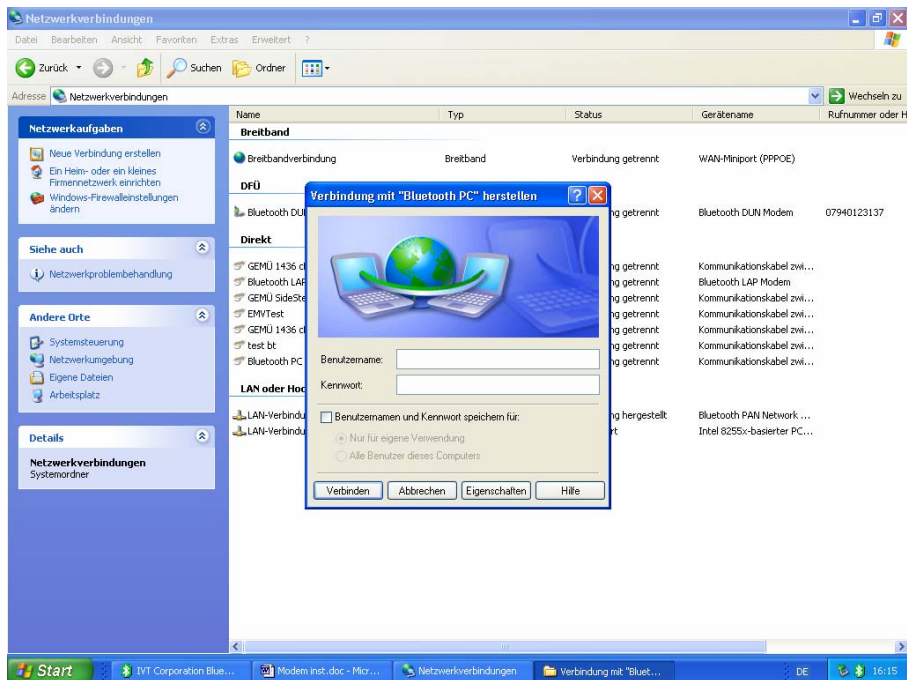


To finish the process, you have to press the button „finish“.

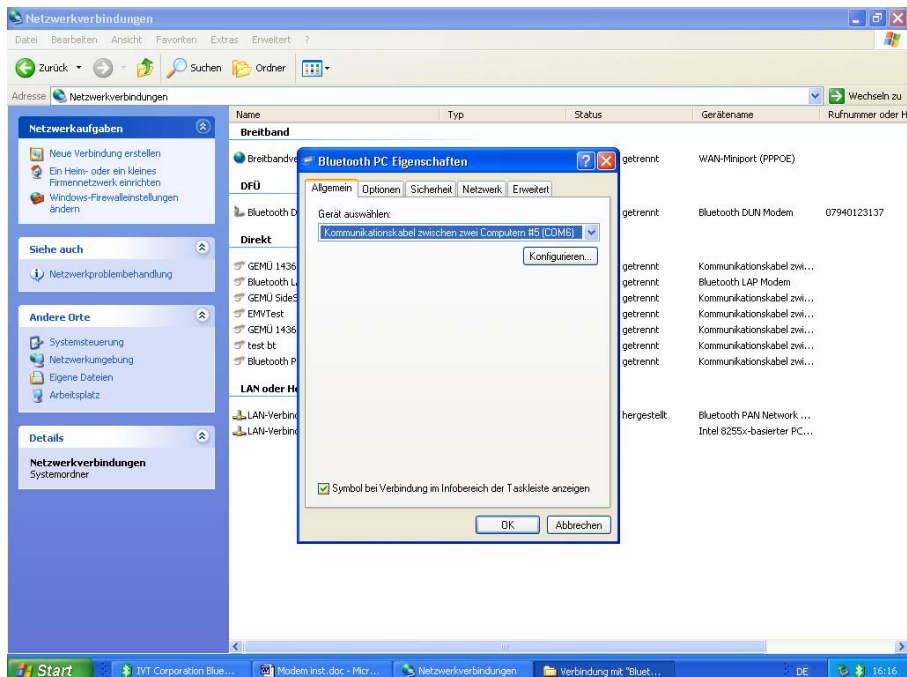




Press the field „Characteristic“.

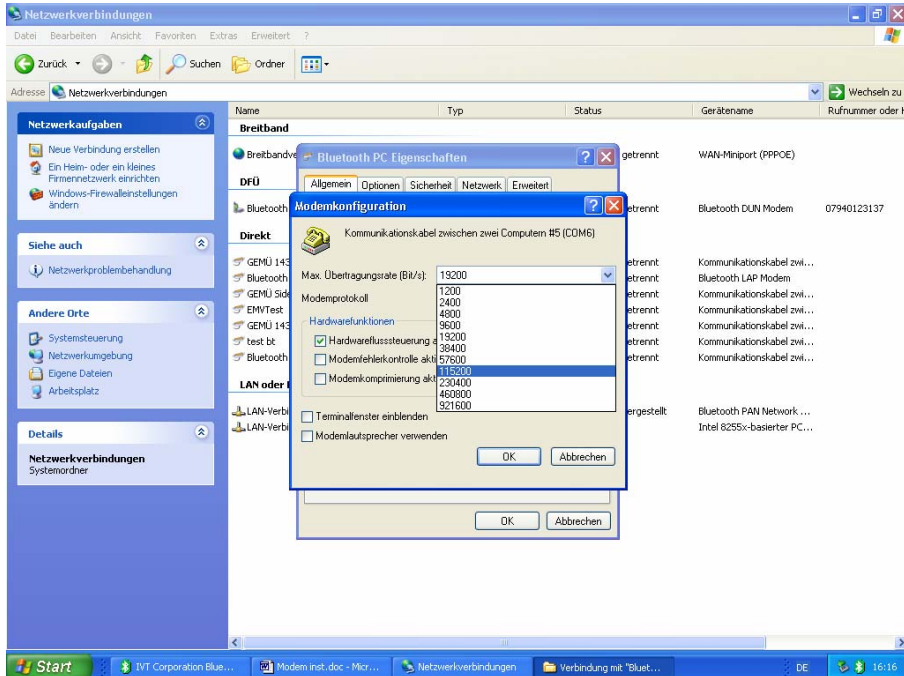


Press in the register „general“ the field „configuration“.

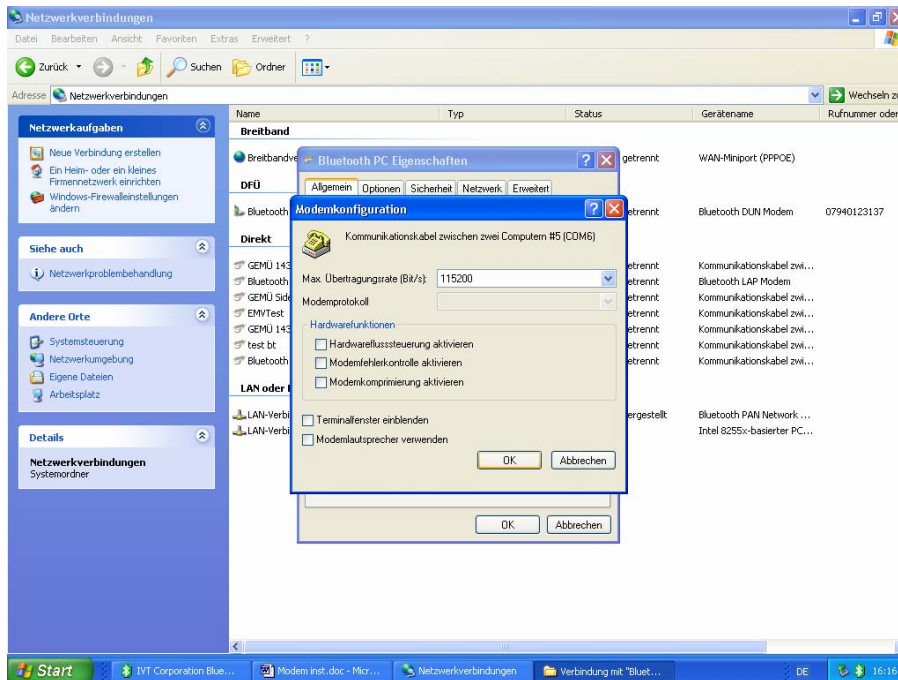




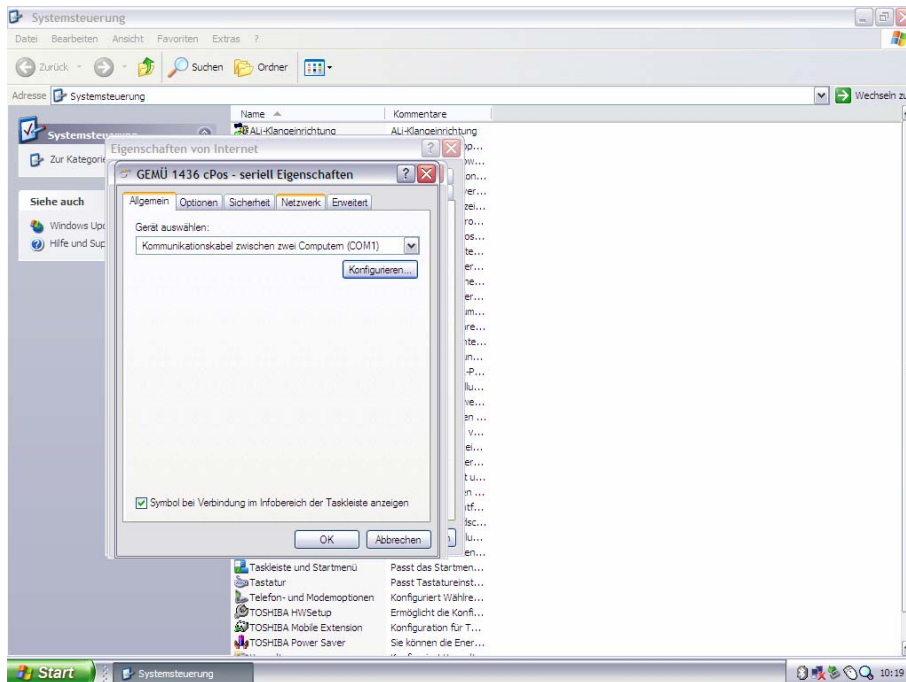
Mark the max. baud rate 115200 Bit/s and delete the selection in the field „Hardware flow control“.



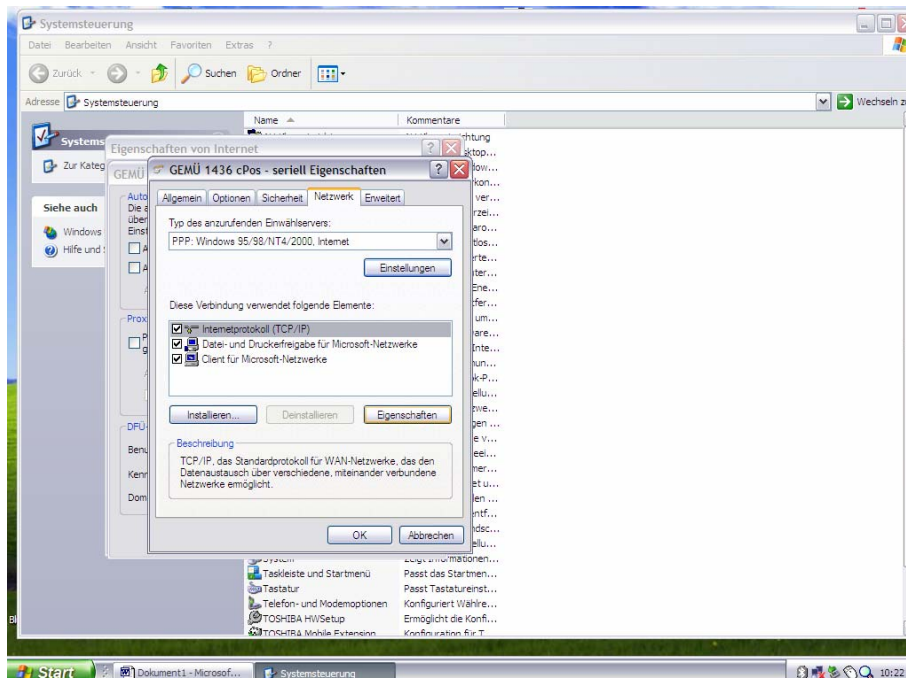
Press the button „OK“.



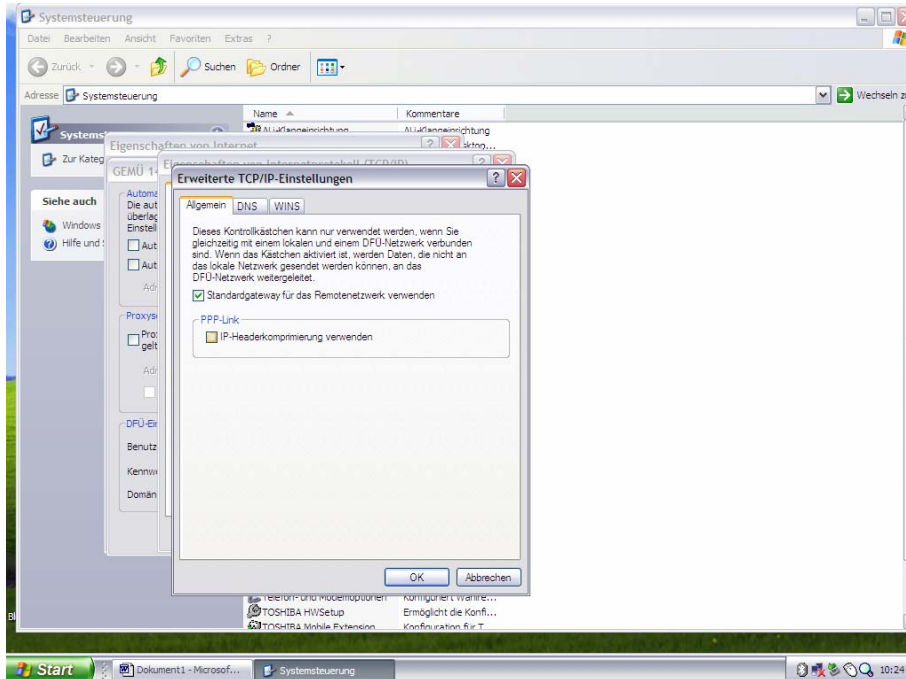
Select the register „network“ .



Select in the register „network“ the advice „Internetprotocoll“ and press the button „configuration“.



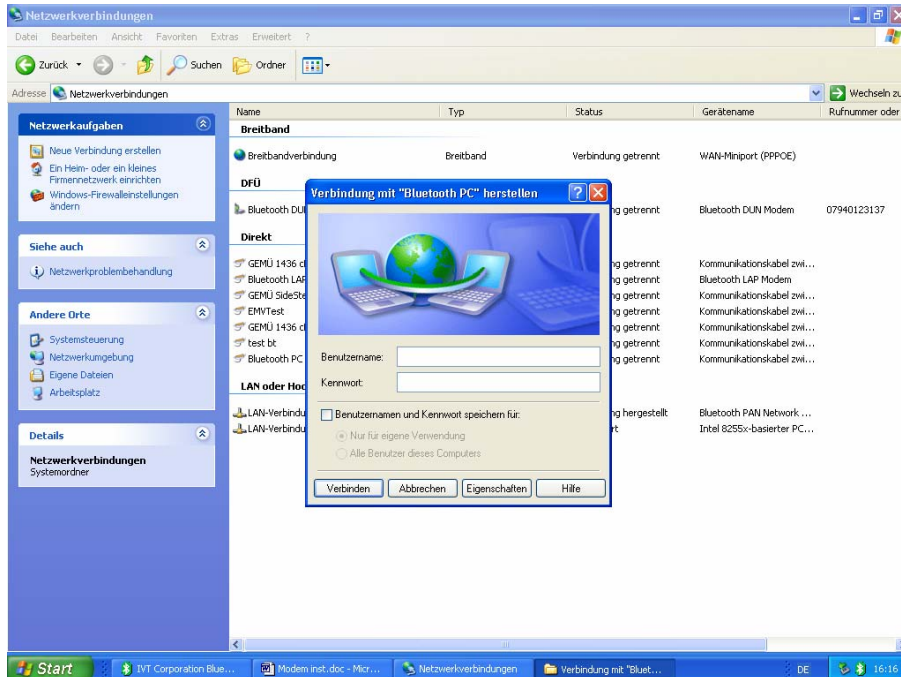
Take off the hook at the button „IP Headercompiling“.  
After that operate the button „OK“.



Close after that all windows by pressing the button „OK“.

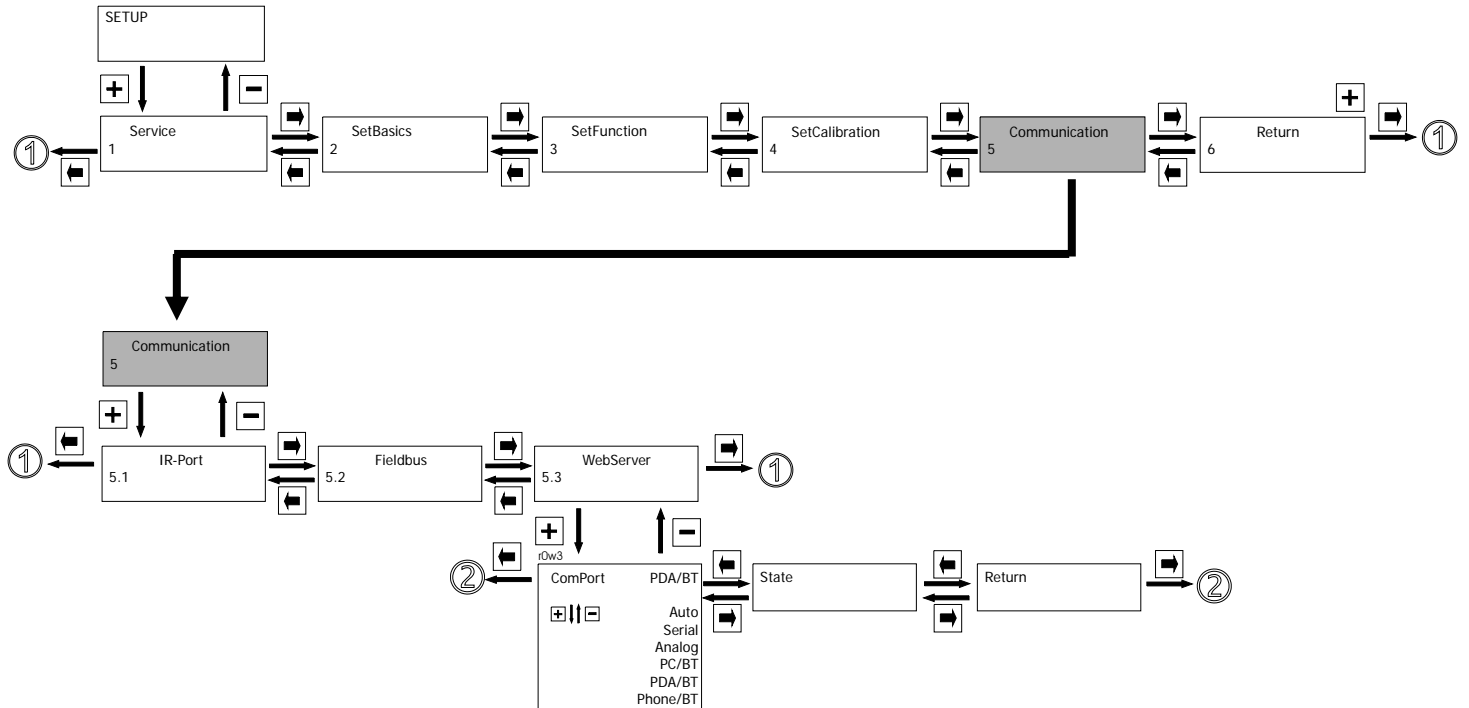
### 6.3.3 Taking up the connection with GEMÜ 1436 cPos

In order to have a connection with GEMÜ 1436 cPos, you have to open the Internet Browser. The next step is to select in the window „data communication connection“ the connection ... and to press the button „connecting“.



### 6.4 Connection with a PDA via Bluetooth

To have a Bluetooth connection via a PDA, you have to do following settings at the GEMÜ 1436 cPos:



#### Communication:

Main menu for the selection of connecting options.

#### WebServer:

Submenu for setting the communication parameter

#### ComPort:

Defines the kind of the communication connection

Setting: PDA/BT when external Bluetooth modules are used (Stollmann® RS+E) and you have contact via a Bluetooth-capable PDA with WinMobile 5.0

#### State:

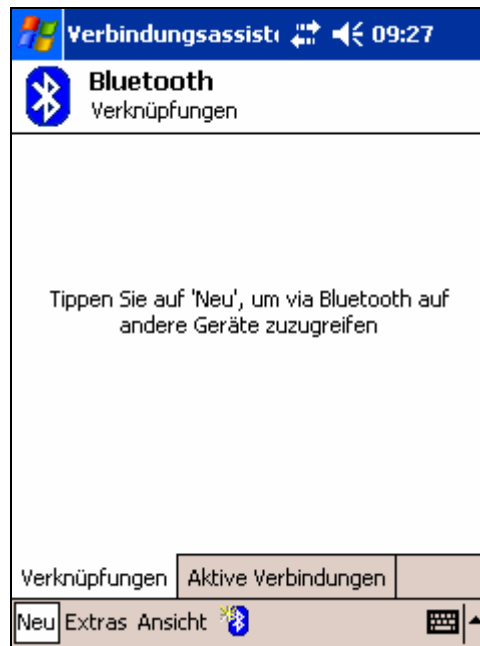
Shows the actual status of the connection

Message:	No Modul	no communication module connected
	Init	the connected communication module is in initialisation
	Init OK	the communication module is correctly initialized
	Connect	the connection works

If you have received in the paramter state the message „Init OK“, you can have a connection with the GEMÜ 1436 cPos via a bluetooth - able PDA.

### 6.4.1 Setting-up of a Bluetooth-connection via PDA

Open the Bluetooth manager and dial the button [ new ]



Select the button „looking for a Bluetooth device“

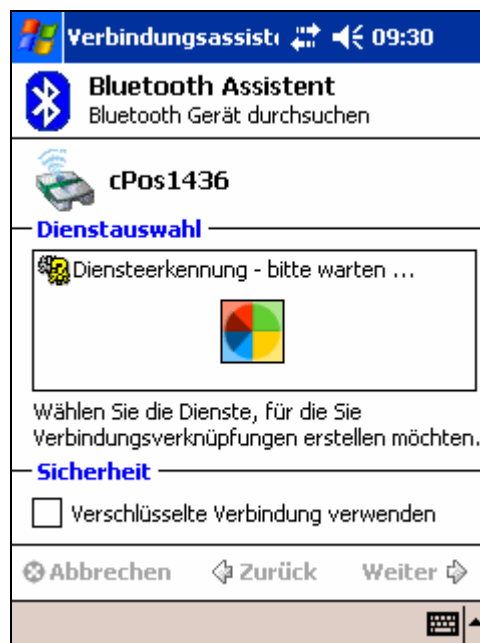





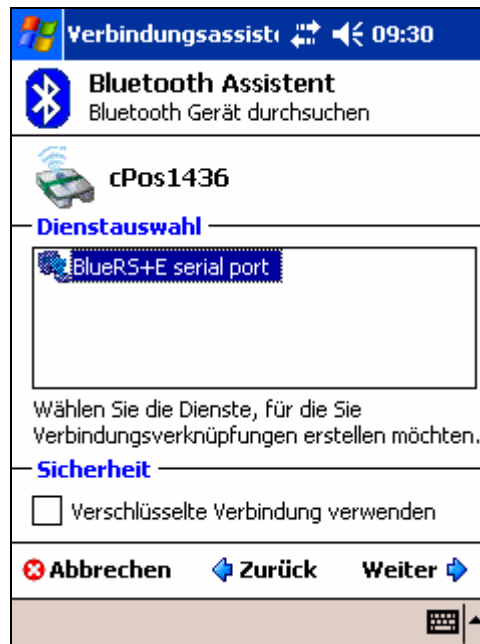
Mark the new device [cPos 1436 ].  
After that press ➡ this button.




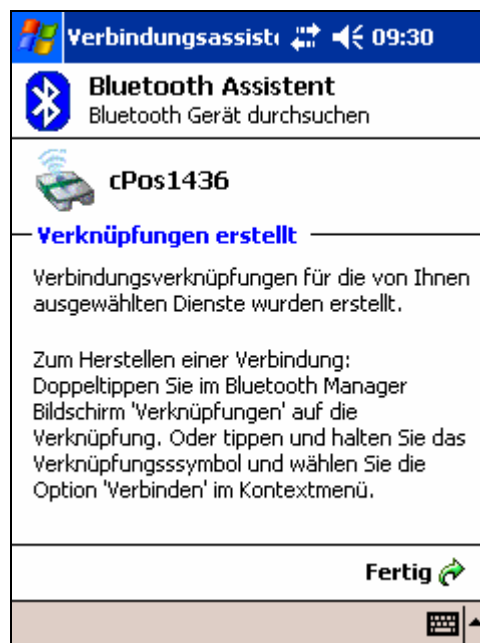
The automatic service detecting



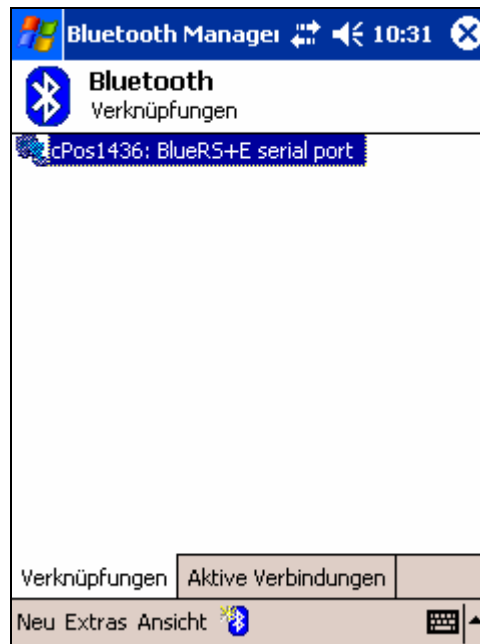
Select „Serial Port Service“ and press the  button.



The linkage with cPos 1436 Nr. 1 works. Click the  button.



To have a connection make a double click on the symbol



Wait till the connection works



Type the Bluetooth Code 0000 (factory setting) and press the  Button.



Now you have to wait for the connection. Then you have to close Bluetooth Manager and open a suitable Browser (Microsoft Pocket Internet Explorer ; Opera mini; Minimo). Type now [www.gemue.de](http://www.gemue.de).



## 7 How to use the GEMÜ-Browser with PC

After the successful connection with GEMÜ 1436 cPos you'll get the following screen.



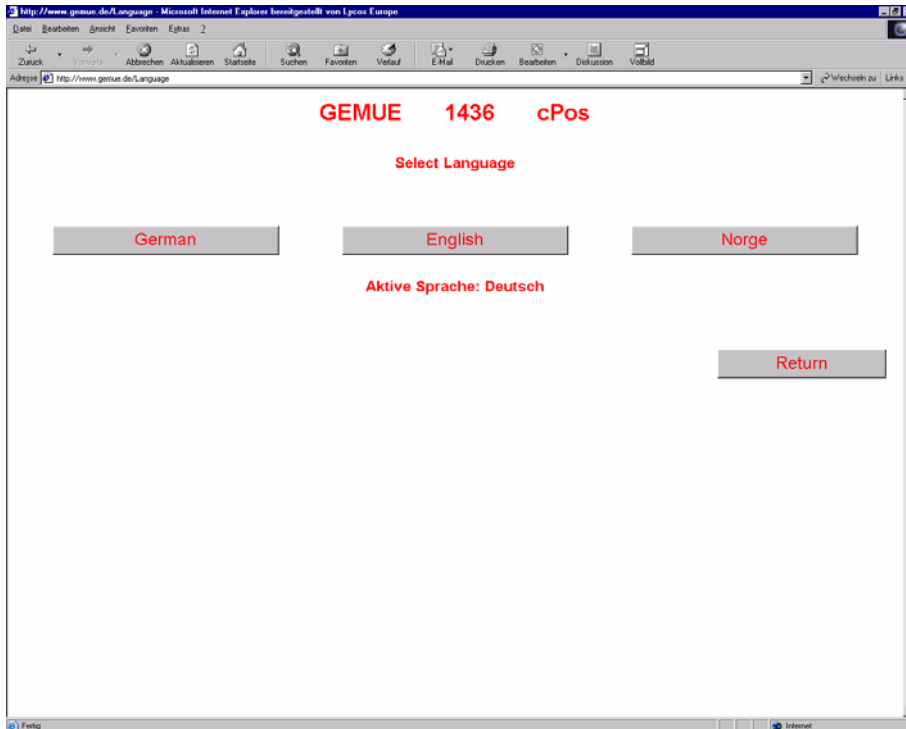
If you press the button „Language“, you get into the menu to set the national language.

If you press the button „Quick Setup“, you get into the menu to set the basics.

If you press the „Advanced Setup“, you get into the menu to set the extended functions and parameters.

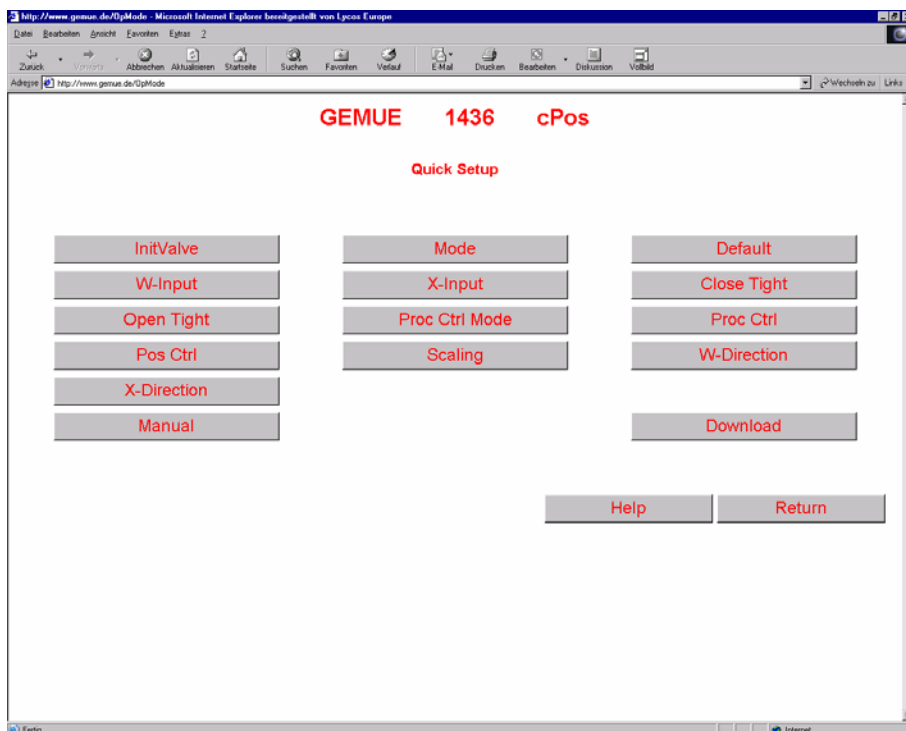
## 7.1 LANGUAGE

You can select the national languages German, English and Norwegian.  
With the function „Return“, you return back to the start screen.



## 7.2 QUICK SETUP

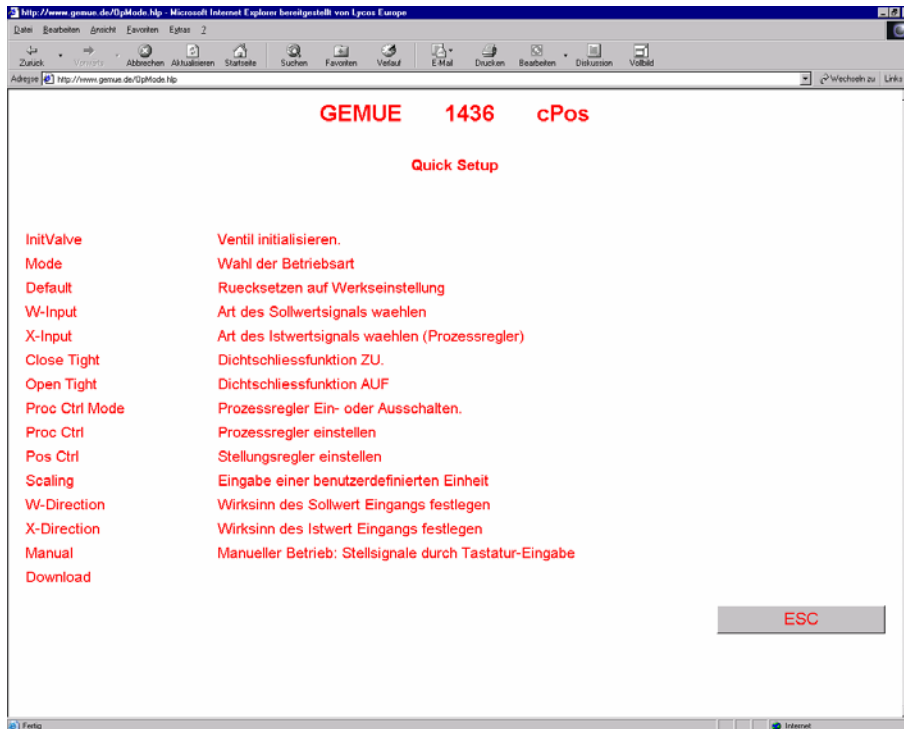
You can set the most important basic function for the GEMÜ 1436 cPos with the buttons. With the button „Return“, you return back to the starting screen.





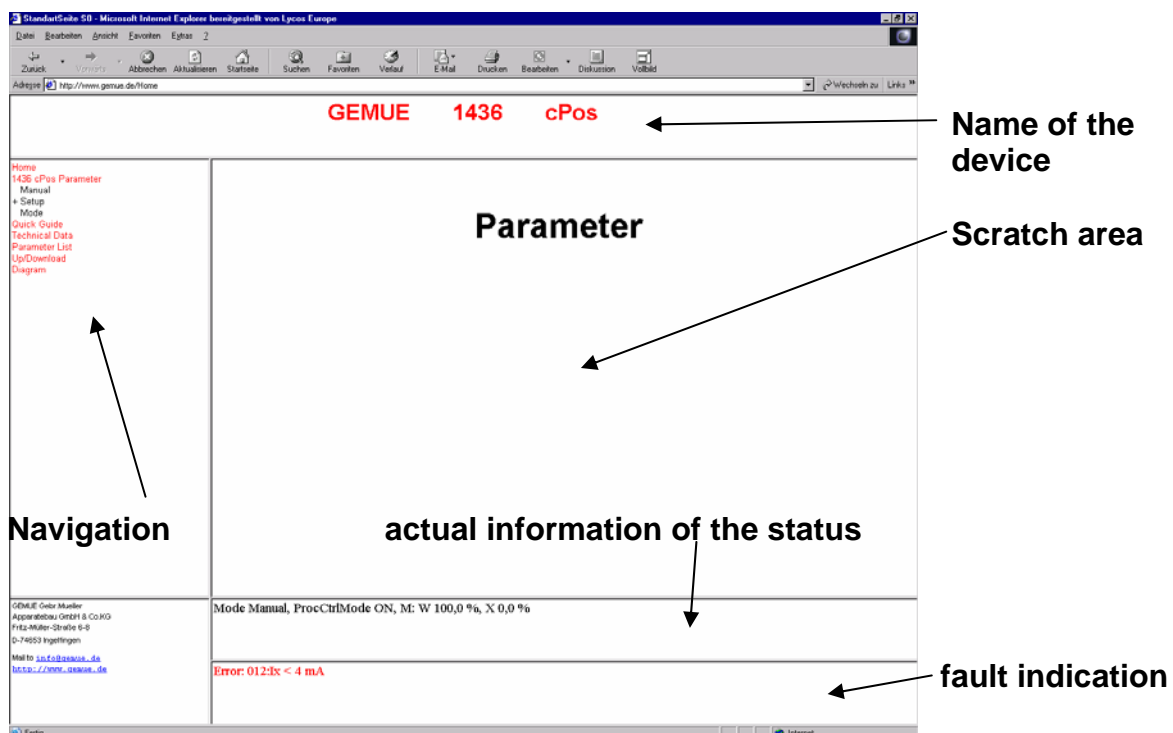
„Help“ explains in a short way the different buttons. If you stay with the pointer of the mouse on a button, you'll also get an explanation for this button.

„ESC“ brings you back in the Quick Setup.

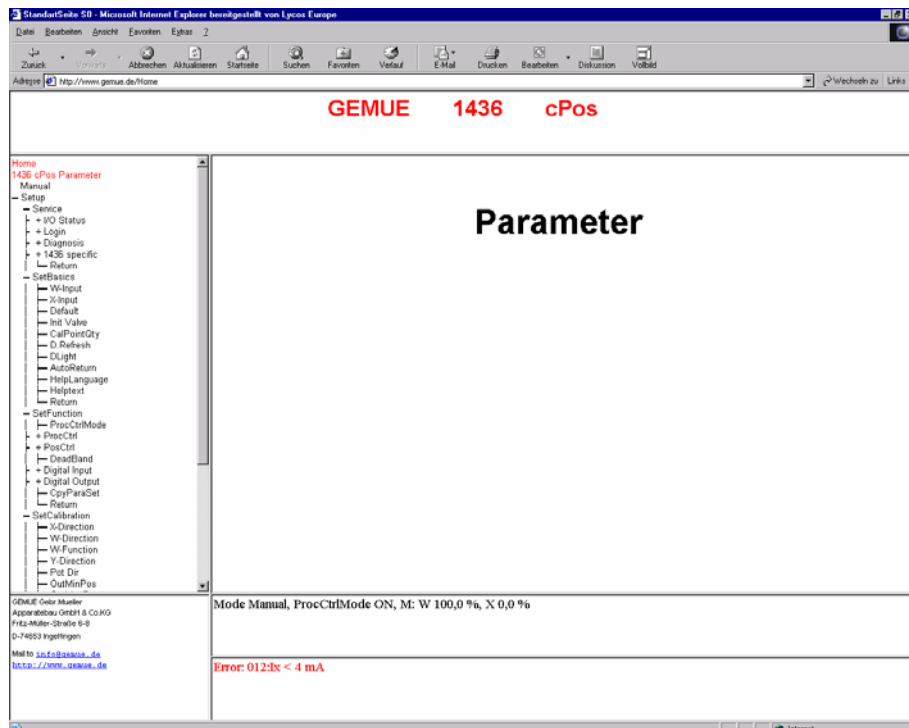


### 7.3 ADVANCED SETUP

„Advanced Setup“ - setting further functions and parameter.  
The screen is in this menu in different areas subdivided.

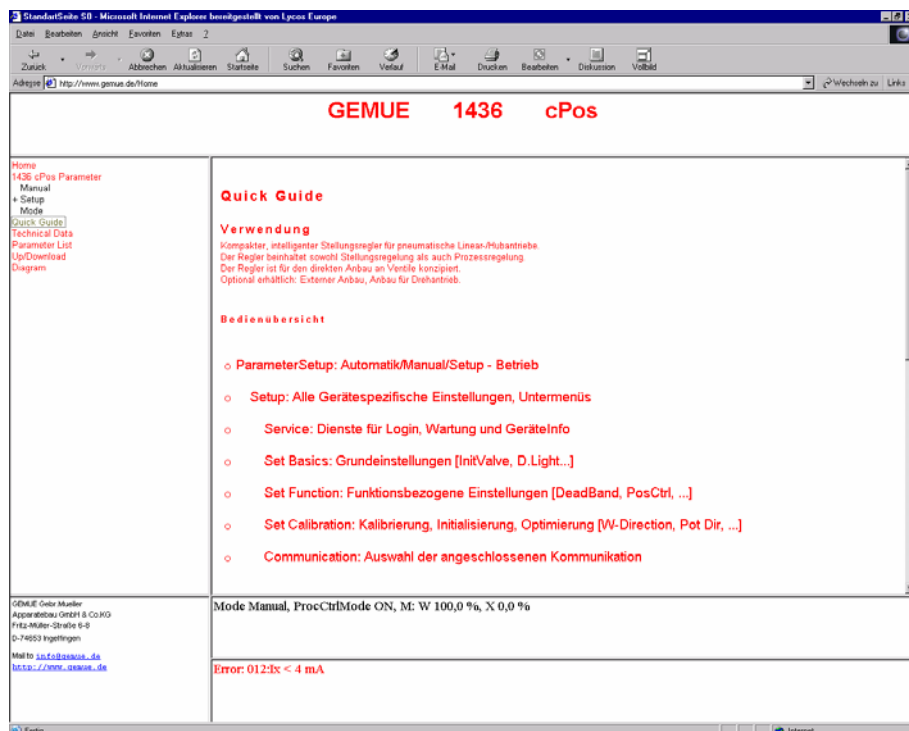


If you click in the navigation list a menu, a submenu will be open and different parameter can be selected.



## 7.4 QUICK GUIDE

In the „Quick Guide“ you get information about the main functions, instructions and further helpful information.



### 7.5 TECHNICAL DATA

The technical datas of the positoner are listed in the menu.

The screenshot shows the GEMÜ 1436 cPos web interface in a Microsoft Internet Explorer browser. The page title is 'GEMÜ 1436 cPos'. The left sidebar contains a menu with links: Home, 1436 cPos Parameter, Manual, + Setup, Mode, Quick Guide, Technical Data (highlighted), Parameter List, Up/Download, and Diagram. The main content area is titled 'Technische Daten' and contains the following information:

Ausgangsweise zur Inbetriebnahmeunterstützung. Details und Grenzwerte siehe Dokumentation.

Spannungsversorgung:	24V DC 3-Leiter
Elektrischer Anschluss	M12 Steckverbinder (Standard)
Pneumatikanschluss	G1/8"
<b>Signaleingänge</b>	
Istwert Stellungsregler	Potentiometer, integriert oder optional extern
Sollwert	0/4mA...20mA
Externer Istwert Prozessregler	0/4mA...20mA
<b>Signalausgänge</b>	
Istwert Ausgang	4mA...20mA
Schaltausgänge	2* Ausgänge über Relaiskontakte (Grenzwert)

At the bottom, there is a status bar showing 'Mode Manual, ProcCtrlMode ON, M: W 100,0 %, X 0,0 %' and an error message 'Error: 012:ix < 4 mA'.

### 7.6 PARAMETER LIST

All the adjusted parameters of the positioner are displayed in the menu „Parameter List“.

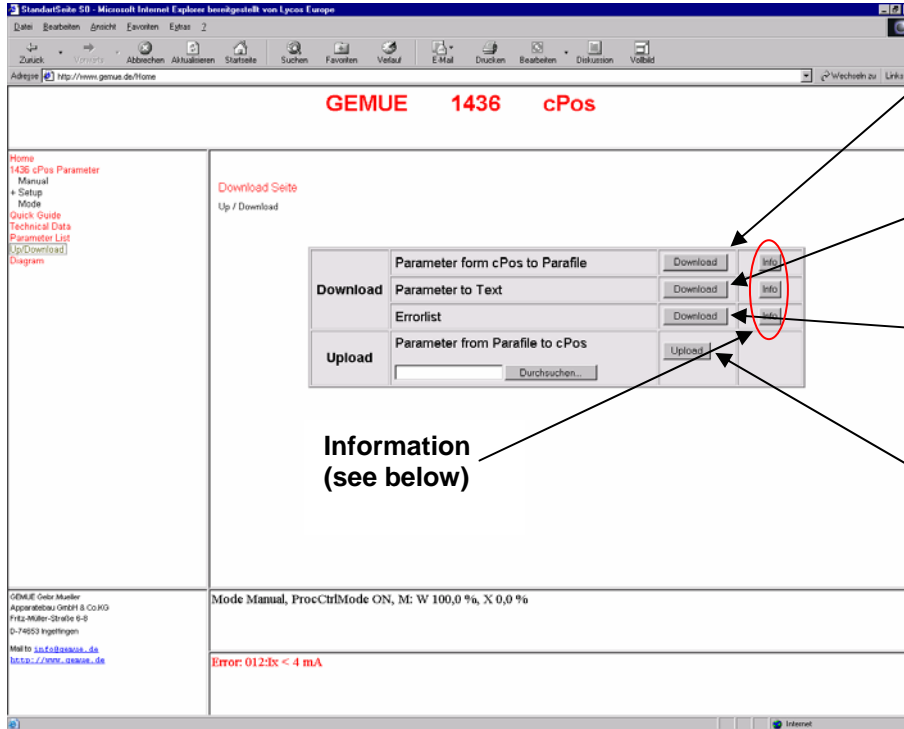
The screenshot shows the GEMÜ 1436 cPos web interface in a Microsoft Internet Explorer browser. The page title is 'GEMÜ 1436 cPos'. The left sidebar contains a menu with links: Home, 1436 cPos Parameter, Manual, + Setup, Mode, Quick Guide, Technical Data, Parameter List (highlighted), Up/Download, and Diagram. The main content area is titled 'Parameter List 1436 cPos' and contains the following parameters:

M: W	100,0%
M: X	0,0%
Mode	Manual
<b>I/O Status</b>	
ActiveParaSet	P1
Pot min:	52,3%
Pot max:	78,1%
I w:	0,0mA
I x:	0,1mA
Proc W	100,0%
Proc X	0,0%
Pos W	57,5%
Pos X	0,0%
Pot Abs	52,3%
Y1:	0

At the bottom, there is a status bar showing 'Mode Manual, ProcCtrlMode ON, M: W 100,0 %, X 0,0 %' and an error message 'Error: 012:ix < 4 mA'.

### 7.7 UP / DOWNLOAD

All adjusted parameters of the positioner could be downloaded and stored in the menu **Up / Download**.



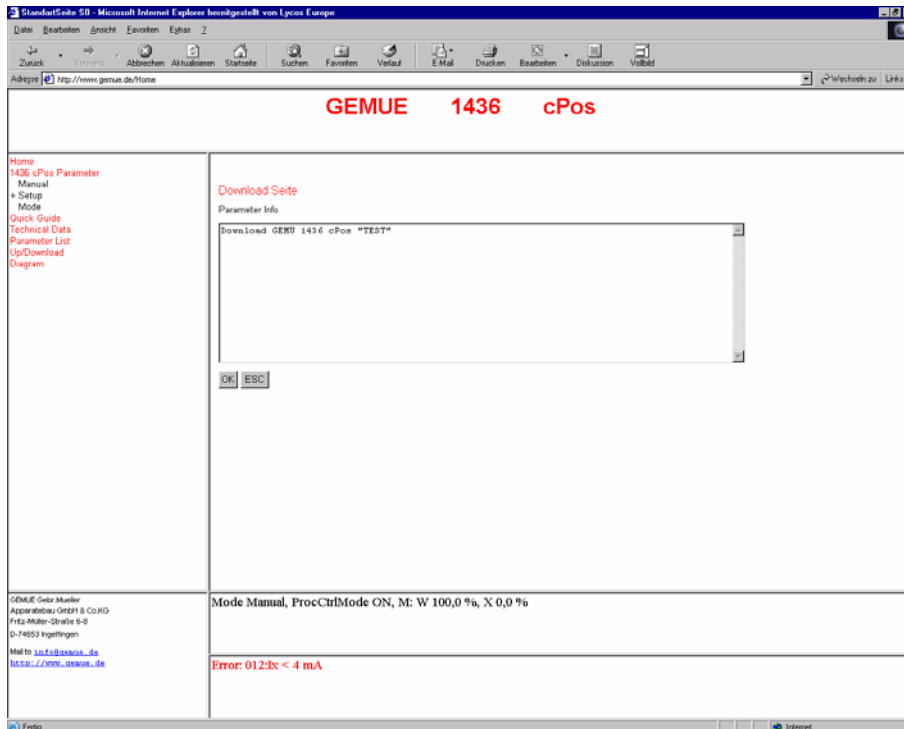
**Parameter from cPos to Parafile:**  
Parameter will be stored as a file

**Parameter to Text:**  
Parameter will be stored as a text file.

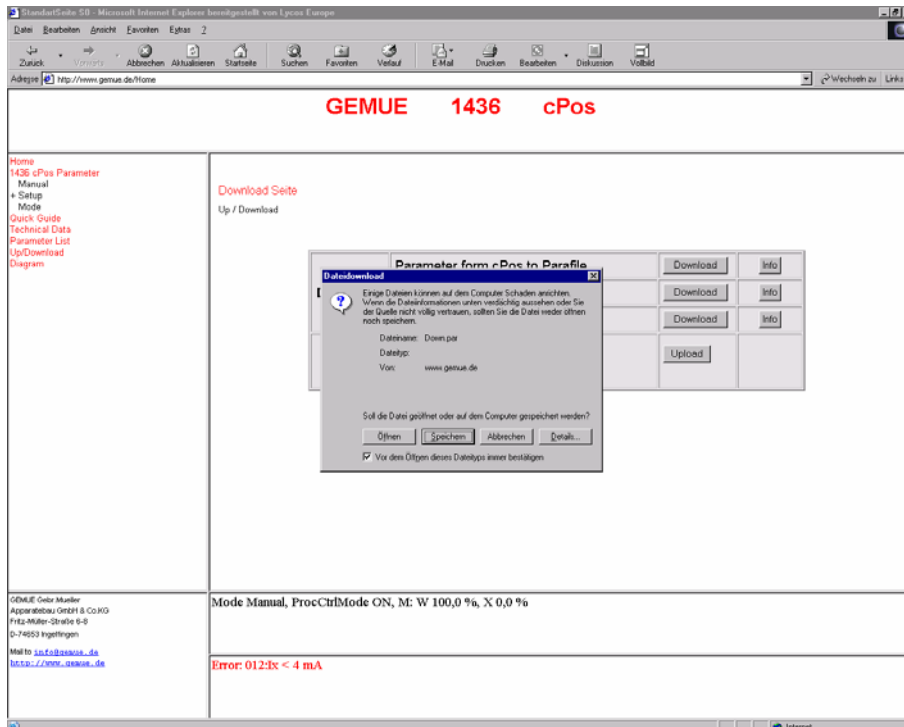
**Errorlist:**  
The errorlist will be stored as a text file.

**Parameter from Parafile to cPos:**  
Stored parameter will be loaded on the positioner.

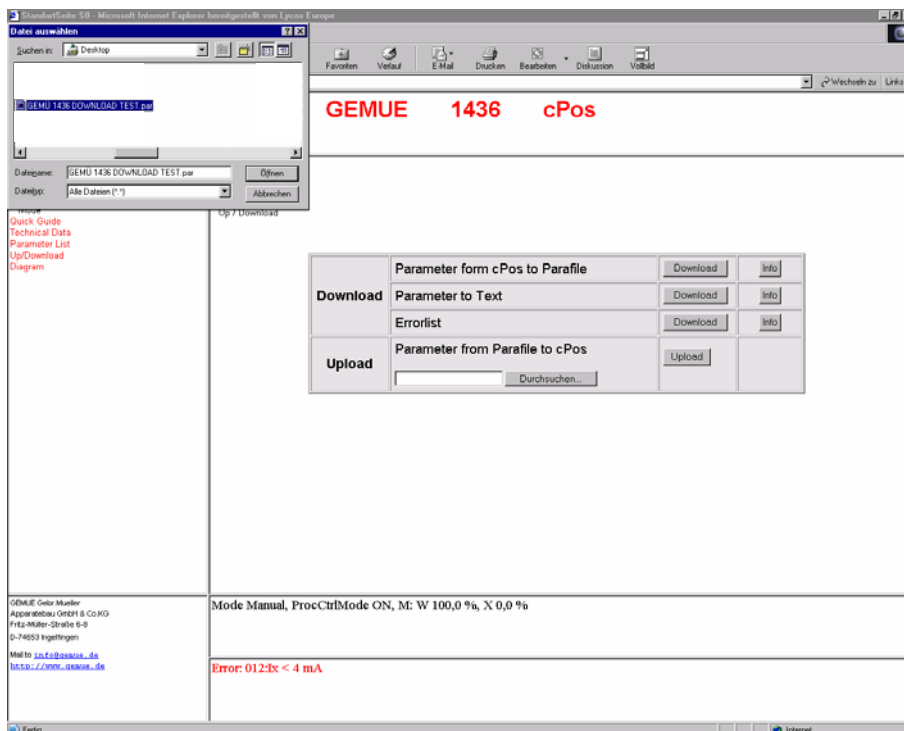
If you select the button „Info“ information could be added to the stored datas.



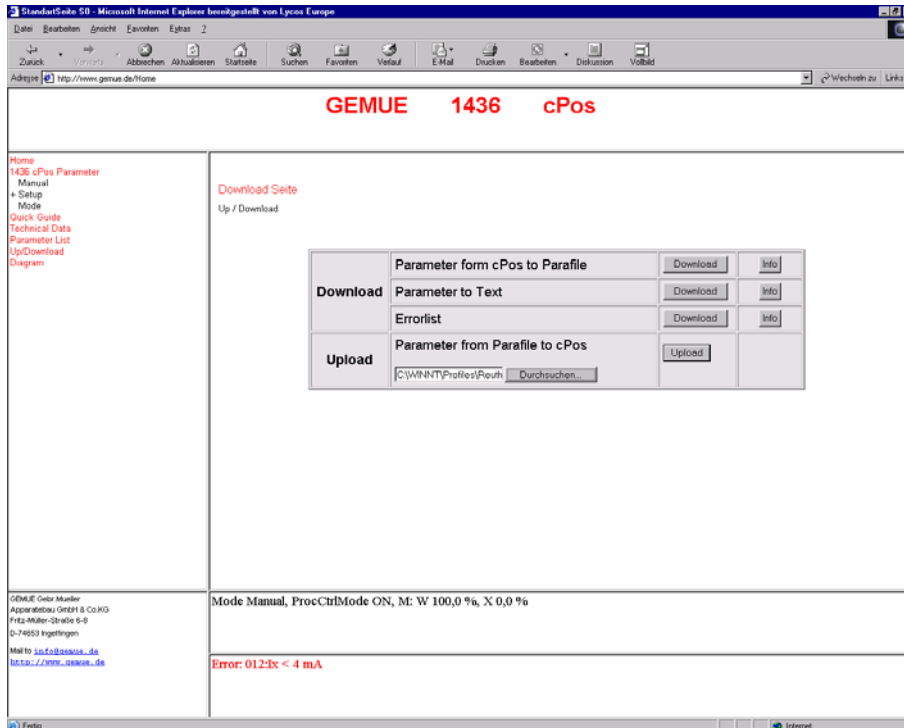
To store parameters after selection of the download function, you have to select the button „Store“.



In this window you have to named the file and define the memory location.



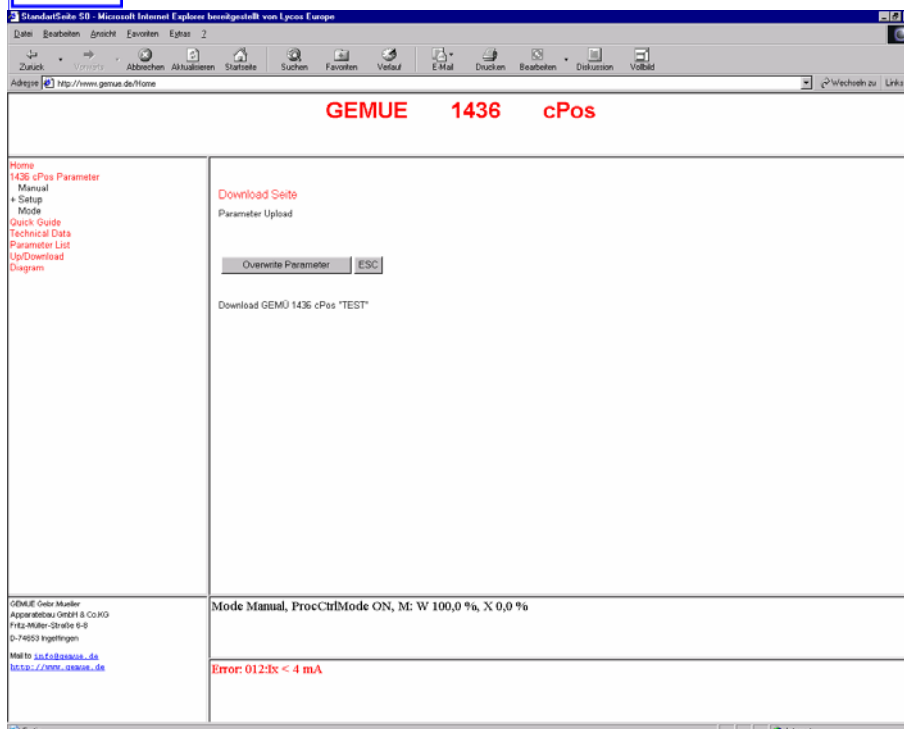
To upload parameter into the positioner, you have to select the button „Search“ and then to select the button „Upload“.



To upload the paramter into the positioner you have to select the button „Overwrite“.



**Attention! Stored parameters in the positioner will be overwritten!**



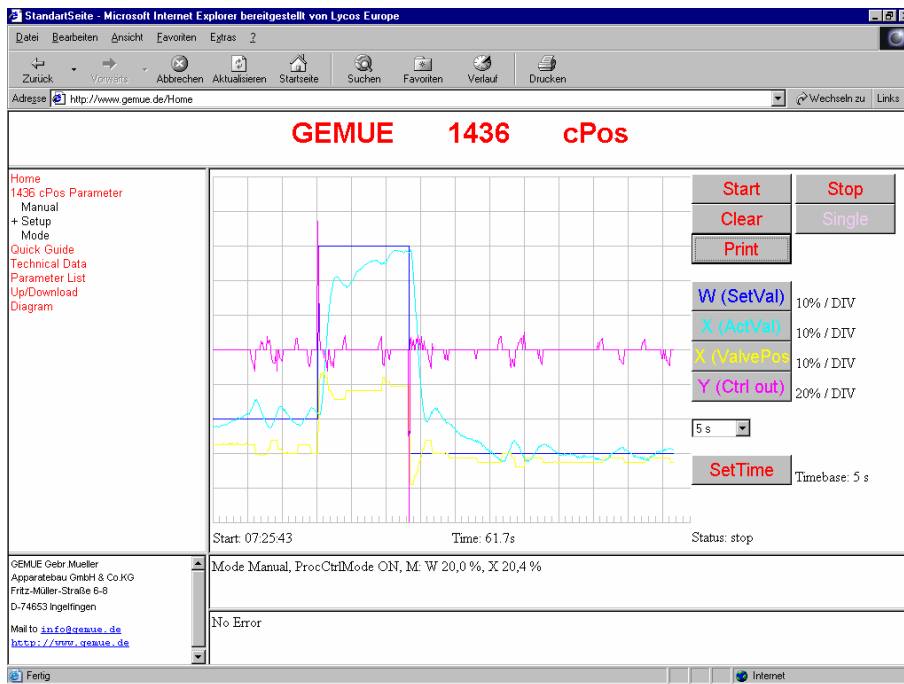


### 7.8 DIAGRAMM-FUNKTION

#### 7.8 DIAGRAMM-FUNCTION

Selecting the menu „Diagram“ opens a window with a oscilloscope - function.

There is the possibility to figured the characteristics of the set-value, the actual-value as also the position and the speed of the valve.



**Start:**  
Start the  
oscilloscope function

**Stop:**  
Stop the  
oscilloscope function

**Clear:**  
Delete the actual  
characteristics

**Print:**  
Print the displayed  
oscilloscope screen

**Single:**  
Documentation the  
period of a window

**SetTime:**  
Time base of X-Axis

**W (SetVal):**  
Documenting the based set value

**X (ActVal):**  
Documenting the based actual value (signal of a closed set value sensor)

**X (ValvePos):**  
Documenting of the valve position

**Y (CtrlOut):**  
Shows the direction and the speed of the valve in process.



# GEMÜ e.<sup>sy</sup>-com Operating manual



GEMÜ Gebr. Müller · Apparatebau GmbH & Co. KG · Fritz-Müller-Str. 6-8 · D-74653 Ingelfingen-Criesbach · Tel. +49 (0) 7940/123-0 · Telefax +49 (0) 7940/123-224  
e-mail: [info@gemue.de](mailto:info@gemue.de) · <http://www.gemue.de>

Subject to modifications · 12/2006 · 88305373