



Example:  
P600M 05-02.AP

## GEMÜ sampling bottle

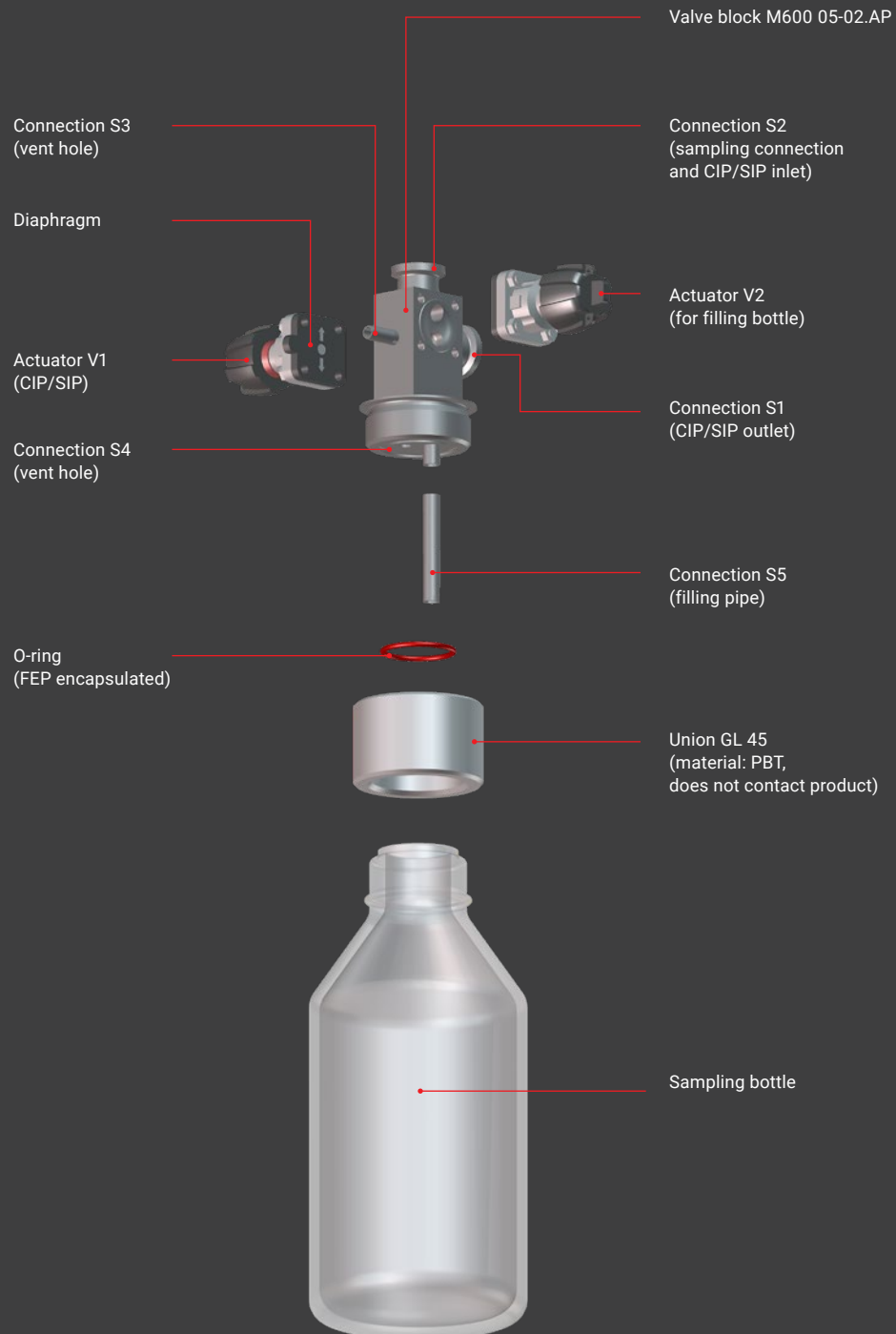
### Areas of application

- Pharmaceutical, biotechnology and cosmetics industries
- Foodstuffs and beverages

### Features

- Microbiologically flawless sampling via a closed system
- Compact and versatile thanks to multi-port valve block solutions in various designs
- Tried-and-tested GEMÜ seal system
- FDA compliant sealing materials

# GEMÜ sampling bottle



Example: P600M 05-02.AP

# Specification | GEMÜ P600M

## M-block sampling system

Operating pressure (plant-side): \_\_\_\_\_ bar

Medium temperature: \_\_\_\_\_ °C

Valve block material:

1.4435 / 316L ☐

1.4435 BN 2 ( $\Delta Fe < 0,5\%$ ) ☐

1.4539 / 904L ☐

Other \_\_\_\_\_

Surface quality of the valve block:

1537 (Ra)  $\leq 0,4\mu m$  electropolished ☐

Other \_\_\_\_\_

Diaphragm material:

EPDM Code \_\_\_\_\_

PTFE Code \_\_\_\_\_

Other \_\_\_\_\_

Sampling bottle:

Without ☐

With Schott Duran Pressure plus glass bottle (clear)  
(operating pressure: -1 bar to max. 1.5 bar rel.)

1000 ml ☐

500 ml ☐

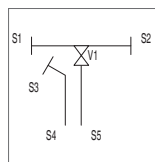
250 ml ☐

With stainless steel bottle 1.4404 (WAZ 3.1)  
(operating pressure: -1 bar to max. 10 bar rel.)

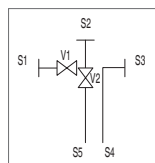
1000 ml ☐

Other \_\_\_\_\_

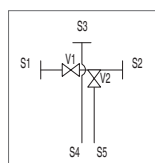
Quantity: \_\_\_\_\_



P600M 05-01.AP





P600M 05-02.AP



P600M 05-02.BP

If you require a customer-specific version of the valve block, please also fill out specification sheet M600 for the block.

Spigot	Pipe connection				Actuator			Other	
					 GEMÜ 601, GEMÜ 602 manual	 GEMÜ 650 pneumatic			
Spigot no.	DN	Code	ød(a)[mm]	s[mm]	Actuator type		Control function	Actuator size	Comment/accessories
S1					V1				
S2					V2				
S3					V3				
S4	6	0	8.0	1.0					Vent hole
S5	6	0	8.0	1.0					Filling pipe

The technical details of each enquiry must be checked by GEMÜ.

**Contact (GEMÜ):** \_\_\_\_\_  
**Customer:** \_\_\_\_\_  
 Department: \_\_\_\_\_  
 Address: \_\_\_\_\_  
 Phone: \_\_\_\_\_ E-mail: \_\_\_\_\_

Please do not write here!

K-No.: \_\_\_\_\_

P600: \_\_\_\_\_

M600: \_\_\_\_\_

X: \_\_\_\_\_

## Description

The sampling bottles from GEMÜ are suitable for contamination-free sampling and transporting samples to the laboratory or quality assurance station. The entire sampling unit is easy to sterilize and autoclavable.

## Technical specifications

- **Nominal sizes:**  
DN 4 to 15
- **Connections:**  
Clamp | butt weld spigot |  
hose barb | others on request
- **Seat sizes:**  
MG8
- **Body materials:**  
1.4435 (valve block) | glass (bottle) |  
others on request
- **Media temperature:**  
Max. 150 °C (dependent on media  
wetted materials)
- **Operating pressure:**  
Up to 10 bar  
(please observe manufacturer's note  
concerning glass bottle)
- **Seal materials:**  
PTFE | EPDM | FEP |  
others on request
- **Grades of surface finish/electropolish**  
up to 0.4 µm

## Applications

- Sterile sampling for laboratory and quality assurance

### Safe

Tried and tested GEMÜ  
seal system made of  
FDA-compliant materials

### Flawless

Both CIP/SIP-capable  
and autoclavable thanks  
to multi-port valve block  
solution



### High quality

Sampling bottle made of  
glass or stainless steel

Example:  
P600M 05-02.AP