

THE EFFECTIVE DIAPHRAGM VALVE

# GEMÜ D41

with electrical position indicator GEMÜ 12A0



## PRODUCT DESCRIPTION

The pneumatically operated diaphragm valve GEMÜ D41 is designed for use in sterile applications. The diaphragm hermetically separates the actuator from the working medium. The valve GEMÜ D41 with EasyLock technology is mounted entirely without loose components using a central gearbox.

## AREAS OF APPLICATION



Biotechnology  
industry



Pharmaceutical  
industry



Cosmetics

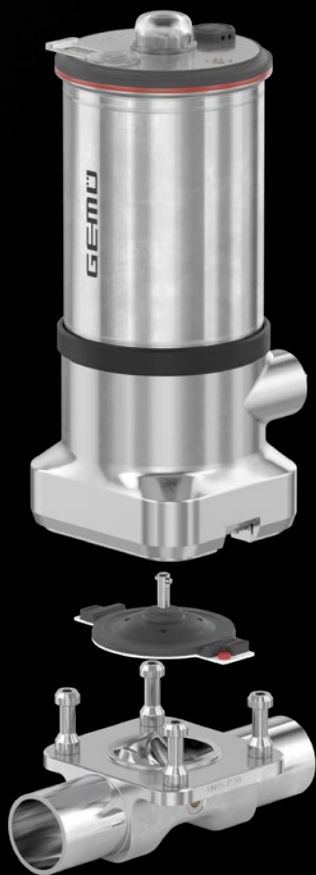


Foodstuffs &  
beverages

**GEMÜ**



[leap.gemu-group.com](http://leap.gemu-group.com)

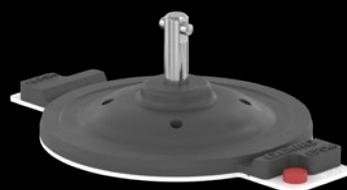


## MAINTENANCE IN SECONDS

Shorter maintenance times, reduced susceptibility to errors and minimized costs thanks to the innovative EasyLock technology – for fast availability and fault-free operation.

## NEW DIAPHRAGM TECHNOLOGY

Low-maintenance diaphragms with constant characteristic leads to longer maintenance cycles and improved control accuracy – for maximum system availability and reliability.



## HIGH FLEXIBILITY

Easy automation capability and intuitive handling of automation modules during installation, commissioning and use – to facilitate processes during operation.

## OPTIMIZED BODY DESIGN

Flow- and weight-optimized design reduces the energy demand, protects sensitive media and improves performance – for shorter downtimes and reduced investment.



GEMÜ D41 with  
intelligent electrical  
position indicator  
GEMÜ 12A0



GEMÜ D41 with  
multi-functional valve  
actuation GEMÜ 44A0

